

## Anti-CYP2C18 antibody (231-490) (STJ29567)

### GENERAL INFORMATION

Product Type	Primary antibodies
Applications	WB/ELISA
Host / Source	Rabbit
Reactivity	Human/Mouse/Rat

### PRODUCT PROPERTIES

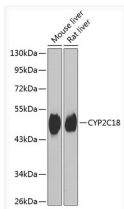
Clonality	Polyclonal
Concentration	Lot specific
Conjugation	Unconjugated
Purification	Affinity purification
Dilution Range	WB:1:500-1:2000 ELISA:Recommended starting concentration is 1 µg/mL. Please optimize the concentration based on your specific assay requirements.
Formulation	PBS with 0.02% Sodium Azide, 50% Glycerol, pH 7.3.
Isotype	IgG
Molecular Weight	Protein Mw: 56kDa Observed Mw: 50kDa
Storage Instruction	Store at -20°C for up to 1 year from the date of receipt, and avoid repeat freeze-thaw cycles.

### TARGET INFORMATION

Gene ID	<a href="#">1562</a>
Gene Symbol	<a href="#">CYP2C18</a>
UniProt ID	<a href="#">CP2CI_HUMAN</a>
Immunogen Region	231-490
Immunogen Sequence	NKIAENFAYIKSYVLERIKE HQESLDMNSARDFIDCFLIK MEQEKHNNQQSEFTVESLIAT VTDMEFGAGTETTSTTLRYGL LLLLKYPEVTAKVQEEIECV VGRNRSPCMQDRSHMPYTDA VVHEIQRYIDLPTNLPHAV TCDVKFKNYLIPKGTIITS LTVLHNDKEFPNPEMFDPG HFLDKSGNFKSDYFMPFSA GKRMCMGEGELARMELFLFLT TILQNFNLKSQVDPKDID
Specificity	Recombinant fusion protein containing a sequence corresponding to amino acids 231-490 of human CYP2C18 (NP_000763.1).

### ADDITIONAL INFORMATION

Note **STRICTLY FOR FURTHER SCIENTIFIC RESEARCH USE ONLY (RUO). MUST NOT TO BE USED IN DIAGNOSTIC OR THERAPEUTIC APPLICATIONS.**



Western blot analysis of extracts of various cell lines, using CYP2C18 antibody (STJ29567) at 1:1000 dilution. Secondary antibody: HRP Goat Anti-Rabbit IgG (H+L) (STJS000856) at 1:10000 dilution. Lysates/proteins: 25 µg per lane. Blocking buffer: 3% nonfat dry milk in TBST. Detection: ECL Basic Kit. Exposure time: 90s.