

## Anti-SPIN2B antibody (1-258) (STJ29544)

### GENERAL INFORMATION

Product Type	Primary antibodies
Applications	WB/ELISA
Host / Source	Rabbit
Reactivity	Human/Mouse/Rat

### PRODUCT PROPERTIES

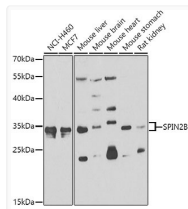
Clonality	Polyclonal
Concentration	Lot specific
Conjugation	Unconjugated
Purification	Affinity purification
Dilution Range	WB:1:500-1:2000 ELISA:Recommended starting concentration is 1 µg/mL. Please optimize the concentration based on your specific assay requirements.
Formulation	PBS with 0.02% Sodium Azide, 50% Glycerol, pH 7.3.
Isotype	IgG
Molecular Weight	Protein Mw: 29kDa Observed Mw: 29kDa
Storage Instruction	Store at -20°C for up to 1 year from the date of receipt, and avoid repeat freeze-thaw cycles.

### TARGET INFORMATION

Gene ID	<a href="#">474343</a>
Gene Symbol	<a href="#">SPIN2B</a>
UniProt ID	<a href="#">SPI2B_HUMAN</a>
Immunogen Region	1-258
Immunogen Sequence	MKTPNAQEAEGQQTRAAAGR ATGSANMTKKKVSQKKQRGR PSSQPRRNIVGCRISHGWKE GDEPITQWKGTVLDQVPINP SLYLVKYDGDICVYGLELHR DERVLSLKILSDRVASSHIS DANLANTIIGKAVEHMFEGE HGSKDEWRGMVLAQAPIMKA WFYITYEKDPVLYMYQLLDD YKEGDLRIMPESSESPPTER EPGGVVDGLIGKHVEYTKED GSKRIGMVIHQVEAKPSVY
Specificity	Recombinant fusion protein containing a sequence corresponding to amino acids 1-258 of human SPIN2B (NP_001006682.1).

### ADDITIONAL INFORMATION

Note **STRICTLY FOR FURTHER SCIENTIFIC RESEARCH USE ONLY (RUO). MUST NOT TO BE USED IN DIAGNOSTIC OR THERAPEUTIC APPLICATIONS.**



Western blot analysis of extracts of various cell lines, using SPIN2B antibody (STJ29544) at 1:1000 dilution. Secondary antibody: HRP Goat Anti-Rabbit IgG (H+L) (STJS000856) at 1:10000 dilution. Lysates/proteins: 25 µg per lane. Blocking buffer: 3% nonfat dry milk in TBST. Detection: ECL Enhanced Kit. Exposure time: 90s.