

## Anti-PDCD2L antibody (1-358) (STJ29531)

### GENERAL INFORMATION

Product Type	Primary antibodies
Applications	WB/IHC-P/ELISA
Host / Source	Rabbit
Reactivity	Human/Mouse/Rat

### PRODUCT PROPERTIES

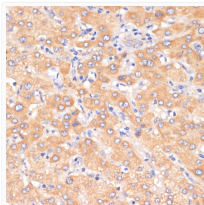
Clonality	Polyclonal
Concentration	Lot specific
Conjugation	Unconjugated
Purification	Affinity purification
Dilution Range	WB:1:500-1:2000 IHC-P:1:50-1:200 ELISA:Recommended starting concentration is 1 µg/mL. Please optimize the concentration based on your specific assay requirements.
Formulation	PBS with 0.02% Sodium Azide, 50% Glycerol, pH 7.3.
Isotype	IgG
Molecular Weight	Protein Mw: 39kDa Observed Mw: 45kDa
Storage Instruction	Store at -20°C for up to 1 year from the date of receipt, and avoid repeat freeze-thaw cycles.

### TARGET INFORMATION

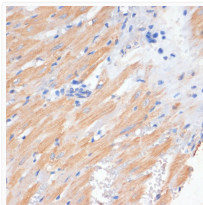
Gene ID	<a href="#">84306</a>
Gene Symbol	<a href="#">PDCD2L</a>
UniProt ID	<a href="#">PDD2L_HUMAN</a>
Immunogen Region	1-358
Immunogen Sequence	MAAVLKPVLLGLRDAPVHGS PTGPGAWTASKLGGIPDALP TVAAPRPVCQRCGQPLALVV QVYCPLEGSFFHRLHVFAC ACPGCSTGGARSWKVFRSQCLQVPEREAQDAKQGNLAA EDWCEGADDWGSDEEGPSP QFTLDFGNDASSAKDVDWTA RLQDLRLQDAVLGAAHPVPP GLPLFLPYIICVADEDDYRD FVNLDHAHSLLRDYQQREGI AMDQLLSQSLPNDGDEKYE
Specificity	Recombinant fusion protein containing a sequence corresponding to amino acids 1-358 of human PDCD2L (NP_115722.1).

### ADDITIONAL INFORMATION

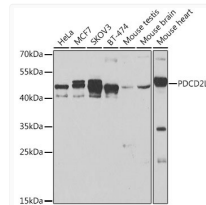
Note **STRICTLY FOR FURTHER SCIENTIFIC RESEARCH USE ONLY (RUO). MUST NOT TO BE USED IN DIAGNOSTIC OR THERAPEUTIC APPLICATIONS.**



Immunohistochemistry analysis of paraffin-embedded human liver using PDCD2L antibody (STJ29531) at dilution of 1:100 (40x lens). Perform microwave antigen retrieval with 10 mM PBS buffer pH 7.2 before commencing with immunohistochemistry staining protocol.



Immunohistochemistry analysis of paraffin-embedded rat heart using PDCD2L antibody (STJ29531) at dilution of 1:100 (40x lens). Perform microwave antigen retrieval with 10 mM PBS buffer pH 7.2 before commencing with immunohistochemistry staining protocol.



Western blot analysis of extracts of various cell lines, using PDCD2L antibody (STJ29531) at 1:500 dilution. Secondary antibody: HRP Goat Anti-Rabbit IgG (H+L) (STJS000856) at 1:10000 dilution. Lysates/proteins: 25 µg per lane. Blocking buffer: 3% nonfat dry milk in TBST. Detection: ECL Basic Kit. Exposure time: 90s.