

Anti-CSRP2BP antibody (523-782) (STJ29517)

GENERAL INFORMATION

Product Type	Primary antibodies
Applications	WB/IF/ICC/ELISA
Host / Source	Rabbit
Reactivity	Human/Rat

PRODUCT PROPERTIES

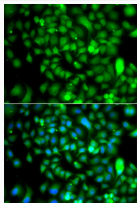
Clonality	Polyclonal
Concentration	Lot specific
Conjugation	Unconjugated
Purification	Affinity purification
Dilution Range	WB:1:1000-1:5000 IF/CC:1:50-1:200 ELISA:Recommended starting concentration is 1 Mu g/mL. Please optimize the concentration based on your specific assay requirements.
Formulation	PBS with 0.05% Proclin300, 50% Glycerol, pH7.3.
Isotype	IgG
Molecular Weight	Protein Mw: 89kDa Observed Mw: 120kDa
Storage Instruction	Store at -20°C for up to 1 year from the date of receipt, and avoid repeat freeze-thaw cycles.

TARGET INFORMATION

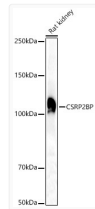
Gene ID	57325
Gene Symbol	KAT14
UniProt ID	CSR2B_HUMAN
Immunogen Region	523-782
Immunogen Sequence	DGIYGAKEGGISRLPAGQAT YRTTCQDFRILDRYQTSLPS RKGFRHQTTKFLYRLVGSSED MAVDQSIIVSPYTSRILKPYI RRDYETKPPKQLLSQIRSH LHRSDPHWTPPEPDAPLDYCY VRPNHIPTINSMCQEFFWPG IDLSECLQYPDFSVVLYKK VIAFGFMVDPVKYNEAYIS FLFVHPEVRRRAGIATFMIYH LIQTCMGKDVTLHVSASNPA MLLYQKFGFKTEEYVLDYF
Specificity	Recombinant fusion protein containing a sequence corresponding to amino acids 523-782 of human CSRP2BP (NP_065397.3).

ADDITIONAL INFORMATION

Note **STRICTLY FOR FURTHER SCIENTIFIC RESEARCH USE ONLY (RUO). MUST NOT TO BE USED IN DIAGNOSTIC OR THERAPEUTIC APPLICATIONS.**



Immunofluorescence analysis of A549 cells using CSRP2BP antibody (STJ29517). Blue: DAPI for nuclear staining.



Western blot analysis of various lysates, using CSRP2BP Rabbit polyclonal antibody (STJ29517) at 1:2000 dilution. Secondary antibody: HRP Goat Anti-Rabbit IgG (H+L) (STJS000856) at 1:10000 dilution. Lysates/proteins: 25 Mu g per lane. Blocking buffer: 3% nonfat dry milk in TBST. Detection: ECL Basic Kit. Exposure time: 30s.