

Anti-CHRAC1 antibody (1-131) (STJ29509)

GENERAL INFORMATION

Product Type	Primary antibodies
Applications	WB/ELISA
Host / Source	Rabbit
Reactivity	Human

PRODUCT PROPERTIES

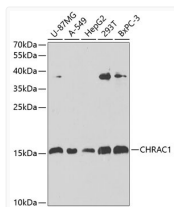
Clonality	Polyclonal
Concentration	Lot specific
Conjugation	Unconjugated
Purification	Affinity purification
Dilution Range	WB:1:500-1:1000 ELISA:Recommended starting concentration is 1 µg/mL. Please optimize the concentration based on your specific assay requirements.
Formulation	PBS with 0.02% Sodium Azide, 50% Glycerol, pH 7.3.
Isotype	IgG
Molecular Weight	Protein Mw: 15kDa Observed Mw: 15kDa
Storage Instruction	Store at -20°C for up to 1 year from the date of receipt, and avoid repeat freeze-thaw cycles.

TARGET INFORMATION

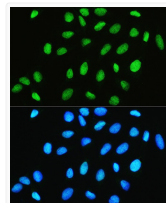
Gene ID	54108
Gene Symbol	CHRAC1
UniProt ID	CHRAC1_HUMAN
Immunogen Region	1-131
Immunogen Sequence	MADVVGKDKGGEQRLISLP LSRIRVIMKSSPEVSSINQE ALVLTAKATELFVQCLATYS YRHGSGKEKKVLTYSDLANT AQQSETFQFLADILPKKILA SKYLKMLKEEKREEDDEENDN DNESDHDEADS
Specificity	Recombinant fusion protein containing a sequence corresponding to amino acids 1-131 of human CHRAC1 (NP_059140.1).

ADDITIONAL INFORMATION

Note STRICTLY FOR FURTHER SCIENTIFIC RESEARCH USE ONLY (RUO). MUST NOT TO BE USED IN DIAGNOSTIC OR THERAPEUTIC APPLICATIONS.



Western blot analysis of extracts of various cell lines, using CHRAC1 antibody (STJ29509) at 1:1000 dilution. Secondary antibody: HRP Goat Anti-rabbit IgG (H+L) at 1:10000 dilution. Lysates/proteins: 25µg per lane. Blocking buffer: 3% non-fat dry milk in TBST. Detection: ECL Basic Kit. Exposure time: 60s.



Immunofluorescence analysis of U2OS cells using CHRAC1 rabbit polyclonal antibody (STJ29509) at dilution of 1:100. Blue: DAPI for nuclear staining.