

Anti-ZNF20 antibody (1-200) (STJ29485)

GENERAL INFORMATION

Product Type	Primary antibodies
Applications	WB/IHC-P/ELISA
Host / Source	Rabbit
Reactivity	Human/Mouse/Rat

PRODUCT PROPERTIES

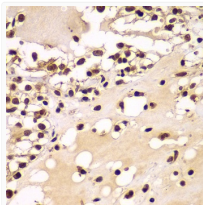
Clonality	Polyclonal
Concentration	Lot specific
Conjugation	Unconjugated
Purification	Affinity purification
Dilution Range	WB:1:500-1:1000 IHC-P:1:50-1:200 ELISA:Recommended starting concentration is 1 Mu g/mL. Please optimize the concentration based on your specific assay requirements.
Formulation	PBS with 0.02% Sodium Azide, 50% Glycerol, pH 7.3.
Isotype	IgG
Molecular Weight	Protein Mw: 62kDa Observed Mw: 62kDa
Storage Instruction	Store at -20°C for up to 1 year from the date of receipt, and avoid repeat freeze-thaw cycles.

TARGET INFORMATION

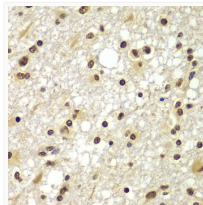
Gene ID	7568
Gene Symbol	ZNF20
UniProt ID	ZNF20_HUMAN
Immunogen Region	1-200
Immunogen Sequence	MMFQDSVAFEDVAVSFTQEE WALLDPSQKNLYRDVMQETF KNLTSVGKTKWKVQNIIEDEYK NPRNLSLMREKLCESKESH HCGESFNQIADDMLNRKTLT GITPCESSVCGEVGTGHSSL NTHIRADTGHKSSEYQEYGE NPYRNKECKKAFSYLDSFQS HDKACTKEKPYDGGKECTETF ISHSCIQRHRVMHSGDGPYK
Specificity	Recombinant fusion protein containing a sequence corresponding to amino acids 1-200 of human ZNF20 (NP_066966.2).

ADDITIONAL INFORMATION

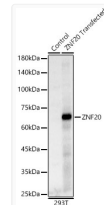
Note STRICTLY FOR FURTHER SCIENTIFIC RESEARCH USE ONLY (RUO). MUST NOT TO BE USED IN DIAGNOSTIC OR THERAPEUTIC APPLICATIONS.



Immunohistochemistry analysis of ZNF20 in paraffin-embedded human kidney cancer using ZNF20 Rabbit polyclonal antibody (STJ29485) at dilution of 1:100 (40x lens). Perform microwave antigen retrieval with 10 mM PBS buffer pH 7. 2 before commencing with immunohistochemistry staining protocol.



Immunohistochemistry analysis of ZNF20 in paraffin-embedded human brain cancer using ZNF20 Rabbit polyclonal antibody (STJ29485) at dilution of 1:100 (40x lens). Perform microwave antigen retrieval with 10 mM PBS buffer pH 7. 2 before commencing with immunohistochemistry staining protocol.



Western blot analysis of lysates from wild type (WT) and 293T cells transfected with ZNF20 using ZNF20 Rabbit polyclonal antibody (STJ29485) at 1:700 dilution. Secondary antibody: HRP Goat Anti-Rabbit IgG (H+L) (STJS000856) at 1:10000 dilution. Lysates/proteins: 25 Mu g per lane. Blocking buffer: 3% nonfat dry milk in TBST. Detection: ECL Basic Kit. Exposure time: 1s.