

Anti-BMP15 antibody (143-392) (STJ29460)

GENERAL INFORMATION

Product Type	Primary antibodies
Applications	WB/IF/ICC/ELISA
Host / Source	Rabbit
Reactivity	Human/Mouse/Rat

PRODUCT PROPERTIES

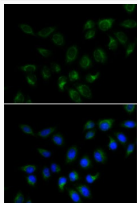
Clonality	Polyclonal
Concentration	Lot specific
Conjugation	Unconjugated
Purification	Affinity purification
Dilution Range	WB:1:500-1:2000 IF/CC:1:50-1:100 ELISA:Recommended starting concentration is 1 Mu g/mL. Please optimize the concentration based on your specific assay requirements.
Formulation	PBS with 0.02% Sodium Azide, 50% Glycerol, pH 7.3.
Isotype	IgG
Molecular Weight	Protein Mw: 45kDa Observed Mw: 45-50kDa
Storage Instruction	Store at -20°C for up to 1 year from the date of receipt, and avoid repeat freeze-thaw cycles.

TARGET INFORMATION

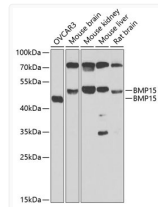
Gene ID	9210
Gene Symbol	BMP15
UniProt ID	BMP15_HUMAN
Immunogen Region	143-392
Immunogen Sequence	LTRFNLCHVEPWVQKNPTN HFPSEGDSSKPSLMSNAWK EMDITQLVQQRFWNNKGHRI LRLRFMCQQKQDSGGLELWH GTSSLDIAFLLLYFNDRTHKS IRKAKFLPRGMEEFMERESL LRRTRQADGISA EVTASSK HSGPENNQCSLHPFQISFRQ LGWDHWIAPPFYTPNYCKG TCLRVLRLDGLNSPNHAIQN LINQLVDQSVPRPSCVPYKY VPISVLMIEANGSILYKEY
Specificity	Recombinant fusion protein containing a sequence corresponding to amino acids 143-392 of human BMP15 (NP_005439.2).

ADDITIONAL INFORMATION

Note **STRICTLY FOR FURTHER SCIENTIFIC RESEARCH USE ONLY (RUO). MUST NOT TO BE USED IN DIAGNOSTIC OR THERAPEUTIC APPLICATIONS.**



Immunofluorescence analysis of MCF7 cells using BMP15 Rabbit polyclonal antibody (STJ29460). Secondary antibody: Cy3 Goat Anti-Rabbit IgG (H+L) at 1:500 dilution. Blue: DAPI for nuclear staining.



Western blot analysis of various lysates using BMP15 Rabbit polyclonal antibody (STJ29460) at 1:1000 dilution. Secondary antibody: HRP Goat Anti-Rabbit IgG (H+L) (STJS000856) at 1:10000 dilution. Lysates/proteins: 25 Mu g per lane. Blocking buffer: 3% nonfat dry milk in TBST. Detection: ECL Enhanced Kit. Exposure time: 30s.