

Anti-SERPINA4 antibody (178-427) (STJ29459)

GENERAL INFORMATION

Product Type	Primary antibodies
Applications	WB/IF/ICC/ELISA
Host / Source	Rabbit
Reactivity	Human/Mouse/Rat

PRODUCT PROPERTIES

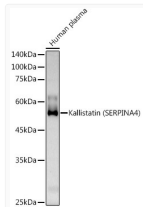
Clonality	Polyclonal
Concentration	Lot specific
Conjugation	Unconjugated
Purification	Affinity purification
Dilution Range	WB:1:100-1:500 IF/CC:1:50-1:100 ELISA:Recommended starting concentration is 1 Mu g/mL. Please optimize the concentration based on your specific assay requirements.
Formulation	PBS with 0.05% Proclin300, 50% Glycerol, pH7.3.
Isotype	IgG
Molecular Weight	Protein Mw: 49kDa Observed Mw: 49kDa
Storage Instruction	Store at -20°C for up to 1 year from the date of receipt, and avoid repeat freeze-thaw cycles.

TARGET INFORMATION

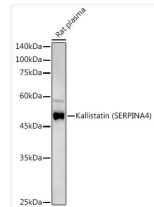
Gene ID	5267
Gene Symbol	SERPINA4
UniProt ID	KAIN_HUMAN
Immunogen Region	178-427
Immunogen Sequence	TIQLINDHVKKETRGKIVDL VSELKKDVLMLVNYIYFKA LWEKPFISSRTTPKDFYVDE NTTVRVPMMLQDQEHHWYLH DRYLPCSVLRMDYKGDATVF FILPNQGKMREIEEVLTPEM LMRWNNLLRKRNFYKLELH LPKFSISGSYVLDQILPRLG FTDLFSKWADLSGITKQKQL EASKSFHKATLDVDEAGTEA AAATSFAIKFFSAQTNRHIL RFNRPFLVIVFSTSTQSVL
Specificity	Recombinant fusion protein containing a sequence corresponding to amino acids 178-427 of human Kallistatin (SERPINA4) (NP_006206.2).

ADDITIONAL INFORMATION

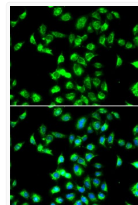
Note **STRICTLY FOR FURTHER SCIENTIFIC RESEARCH USE ONLY (RUO). MUST NOT TO BE USED IN DIAGNOSTIC OR THERAPEUTIC APPLICATIONS.**



Western blot analysis of extracts of Human plasma, using Kallistatin (SERPINA4) rabbit polyclonal antibody (STJ29459) at 1:500 dilution. Secondary antibody: HRP Goat Anti-rabbit IgG (H+L) (STJS000856) at 1:10000 dilution. Lysates/proteins: 25 Mu g per lane. Blocking buffer: 3% non-fat dry milk in TBST. Detection: ECL Basic Kit. Exposure time: 180s.



Western blot analysis of extracts of various cell lines, using Kallistatin (SERPINA4) rabbit polyclonal antibody (STJ29459) at 1:500 dilution. Secondary antibody: HRP Goat Anti-rabbit IgG (H+L) (STJS000856) at 1:10000 dilution. Lysates/proteins: 25 Mu g per lane. Blocking buffer: 3% non-fat dry milk in TBST. Detection: ECL Enhanced Kit. Exposure time: 90s.



Immunofluorescence analysis of MCF7 cells using Kallistatin (SERPINA4) antibody (STJ29459). Blue: DAPI for nuclear staining.