

Anti-WBSCR22 antibody (1-281) (STJ29456)

GENERAL INFORMATION

Product Type	Primary antibodies
Applications	WB/IF/ICC/ELISA
Host / Source	Rabbit
Reactivity	Human/Rat

PRODUCT PROPERTIES

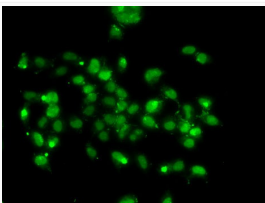
Clonality	Polyclonal
Concentration	Lot specific
Conjugation	Unconjugated
Purification	Affinity purification
Dilution Range	WB:1:500-1:2000 IF/CC:1:50-1:100 ELISA:Recommended starting concentration is 1 μ g/mL. Please optimize the concentration based on your specific assay requirements.
Formulation	PBS with 0.02% Sodium Azide, 50% Glycerol, pH 7.3.
Isotype	IgG
Molecular Weight	Protein Mw: 32kDa Observed Mw: 36kDa
Storage Instruction	Store at -20°C for up to 1 year from the date of receipt, and avoid repeat freeze-thaw cycles.

TARGET INFORMATION

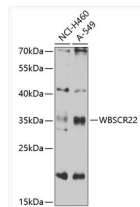
Gene ID	114049
Gene Symbol	BUD23
UniProt ID	BUD23_HUMAN
Immunogen Region	1-281
Immunogen Sequence	MASRGRRPEHGGPELFDYE TEARKYVRNSRMIDIQTRMA GRALELLYLPENKPCYLLDI GCGTGLSGSYLSDEGHYWVG LDISPAMLDEAVDREIEGDL LLGDMGQGIPFKPGTFDGC SISAVQWLCNANKKSENPAK RLYCFFASLFSVLVRSRAV LQLYPENSEQLELITQATK AGFSGGMVVDYPNSAKAKKF YLCLFSGPSTFIPEGLSENQ DEVEPRESVFTNERFPLRM
Specificity	Recombinant fusion protein containing a sequence corresponding to amino acids 1-281 of human WBSCR22 (NP_059998.2).

ADDITIONAL INFORMATION

Note STRICTLY FOR FURTHER SCIENTIFIC RESEARCH USE ONLY (RUO). MUST NOT TO BE USED IN DIAGNOSTIC OR THERAPEUTIC APPLICATIONS.



Immunofluorescence analysis of A-549 cells using WBSCR22 antibody (STJ29456).



Western blot analysis of extracts of various cell lines, using WBSCR22 antibody (STJ29456) at 1:1000 dilution. Secondary antibody: HRP Goat Anti-Rabbit IgG (H+L) (STJS000856) at 1:10000 dilution. Lysates/proteins: 25 μ g per lane. Blocking buffer: 3% nonfat dry milk in TBST. Detection: ECL Basic Kit. Exposure time: 30s.