

Anti-UBE2J2 antibody (1-230) (STJ29455)

GENERAL INFORMATION

Product Type	Primary antibodies
Applications	WB/ELISA
Host / Source	Rabbit
Reactivity	Human/Mouse/Rat

PRODUCT PROPERTIES

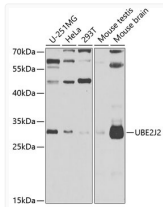
Clonality	Polyclonal
Concentration	Lot specific
Conjugation	Unconjugated
Purification	Affinity purification
Dilution Range	WB:1:500-1:2000 ELISA:Recommended starting concentration is 1 µg/mL. Please optimize the concentration based on your specific assay requirements.
Formulation	PBS with 0.02% Sodium Azide, 50% Glycerol, pH 7.3.
Isotype	IgG
Molecular Weight	Protein Mw: 29kDa Observed Mw: 29kDa
Storage Instruction	Store at -20°C for up to 1 year from the date of receipt, and avoid repeat freeze-thaw cycles.

TARGET INFORMATION

Gene ID	118424
Gene Symbol	UBE2J2
UniProt ID	UB2J2_HUMAN
Immunogen Region	1-230
Immunogen Sequence	MSSTSSKRAPTTATQRLKQD YLRIKKDPVPYICAEPLPSN ILEWHYVVRGPEMTPYEGGY YHGKLIFFREFPFKPPSIYM ITPNGRFKCNTRLCLSDITDF HPDTWNPAAWSVSTILTGLLS FMVEKGP TLGSIETSDFTKR QLAVQSLAFNLKDKVFCFLF PEVVEIKQKQAQDELSSR PQTLPLPDVVPDGETHLVQN GIQLLNHAPGAVPNLAGLQ QANRRHHGLLG
Specificity	Recombinant fusion protein containing a sequence corresponding to amino acids 1-230 of human UBE2J2 (NP_477515.2).

ADDITIONAL INFORMATION

Note **STRICTLY FOR FURTHER SCIENTIFIC RESEARCH USE ONLY (RUO). MUST NOT TO BE USED IN DIAGNOSTIC OR THERAPEUTIC APPLICATIONS.**



Western blot analysis of extracts of various cell lines, using UBE2J2 antibody (STJ29455) at 1:1000 dilution. _Secondary antibody: HRP Goat Anti-Rabbit IgG (H+L) (STJS000856) at 1:10000 dilution. _Lysates/proteins: 25 µg per lane. _Blocking buffer: 3% nonfat dry milk in TBST. _Detection: ECL Enhanced Kit. _Exposure time: 90s.