

Anti-PARP3 antibody (301-540) (STJ29436)

GENERAL INFORMATION

Product Type	Primary antibodies
Applications	WB/IHC-P/IF/ICC/ELISA
Host / Source	Rabbit
Reactivity	Human/Mouse/Rat

PRODUCT PROPERTIES

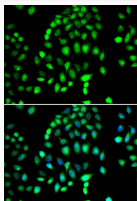
Clonality	Polyclonal
Concentration	Lot specific
Conjugation	Unconjugated
Purification	Affinity purification
Dilution Range	WB:1:500-1:1000 IHC-P:1:50-1:200 IF/CC:1:50-1:100 ELISA:Recommended starting concentration is 1 Mu g/mL. Please optimize the concentration based on your specific assay requirements.
Formulation	PBS with 0.02% Sodium Azide, 50% Glycerol, pH 7.3.
Isotype	IgG
Molecular Weight	Protein Mw: 60kDa Observed Mw: 60kDa
Storage Instruction	Store at -20°C for up to 1 year from the date of receipt, and avoid repeat freeze-thaw cycles.

TARGET INFORMATION

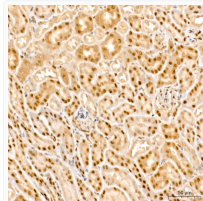
Gene ID	10039
Gene Symbol	PARP3
UniProt ID	PARP3_HUMAN
Immunogen Region	301-540
Immunogen Sequence	KRVQPCSLDPATQKLITNIF SKEMFKNTMALMDLDVKKMP LGKLSKQIARGFEALEALE EALKGPTDGGQSLLEELSSH F YTVIPHNFGHSQPPPIINSPE LQAKKDMLLVLADIELAQ LQAVSEQEKTVEEVPHPLDR DYQLLKCQLQLLDGSAPEYK VIQTYLEQTGSNHRCPQLQ IWKVNVQEGEEDRFQAHSKLG NRKLLWHGVTNMAVVAAILTS GLRIMPHSGGRVGGKIYFA
Specificity	Recombinant fusion protein containing a sequence corresponding to amino acids 178-533 of human PARP3 (NP_005476.4).

ADDITIONAL INFORMATION

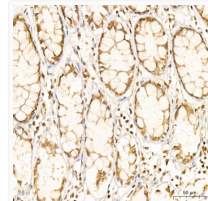
Note **STRICTLY FOR FURTHER SCIENTIFIC RESEARCH USE ONLY (RUO). MUST NOT TO BE USED IN DIAGNOSTIC OR THERAPEUTIC APPLICATIONS.**



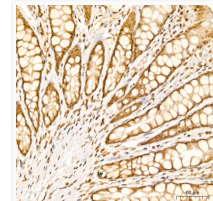
Immunofluorescence analysis of MCF-7 cells using PARP3 Rabbit polyclonal antibody (STJ29436). Secondary antibody: Cy3 Goat Anti-Rabbit IgG (H+L) at 1:500 dilution. Blue: DAPI for nuclear staining.



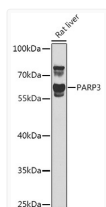
Immunohistochemistry analysis of PARP3 in paraffin-embedded Mouse kidney tissue using PARP3 Rabbit polyclonal antibody (STJ29436) at a dilution of 1:100 (40x lens). High pressure antigen retrieval was performed with 0.01 M citrate buffer (pH 6.0) prior to immunohistochemistry staining.



Immunohistochemistry analysis of PARP3 in paraffin-embedded Human colon tissue using PARP3 Rabbit polyclonal antibody (STJ29436) at a dilution of 1:100 (40x lens). High pressure antigen retrieval was performed with 0.01 M citrate buffer (pH 6.0) prior to immunohistochemistry staining.



Immunohistochemistry analysis of PARP3 in paraffin-embedded Rat colon tissue using PARP3 Rabbit polyclonal antibody (STJ29436) at a dilution of 1:100 (40x lens). High pressure antigen retrieval was performed with 0.01 M citrate buffer (pH 6.0) prior to immunohistochemistry staining.



Western blot analysis of lysates from Rat liver, using PARP3 Rabbit polyclonal antibody (STJ29436) at 1:1000 dilution. Secondary antibody: HRP Goat Anti-Rabbit IgG (H+L) (STJS000856) at 1:10000 dilution. Lysates/proteins: 25 Mu g per lane. Blocking buffer: 3% nonfat dry milk in TBST. Detection: ECL Basic Kit. Exposure time: 90s.