

Anti-GOLM1 antibody (112-401) (STJ29422)

GENERAL INFORMATION

Product Type	Primary antibodies
Applications	WB/IHC-P/IF/ICC/ELISA
Host / Source	Rabbit
Reactivity	Human/Mouse/Rat

PRODUCT PROPERTIES

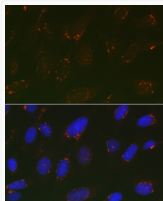
Clonality	Polyclonal
Concentration	Lot specific
Conjugation	Unconjugated
Purification	Affinity purification
Dilution Range	WB:1:500-1:1000 IHC-P:1:50-1:200 IF/CC:1:50-1:200 ELISA:Recommended starting concentration is 1 µg/mL. Please optimize the concentration based on your specific assay requirements.
Formulation	PBS with 0.05% Proclin300, 50% Glycerol, pH 7.3.
Isotype	IgG
Molecular Weight	Protein Mw: 45kDa Observed Mw: 75kDa
Storage Instruction	Store at -20°C for up to 1 year from the date of receipt, and avoid repeat freeze-thaw cycles.

TARGET INFORMATION

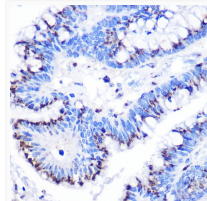
Gene ID	51280
Gene Symbol	GOLM1
UniProt ID	GOLM1_HUMAN
Immunogen Region	112-401
Immunogen Sequence	TGERLIRVLQDQLKTLQRNY GRLQQDVLQFQKNQTNLERK FSYDLSQCINQMKEVKEQCE ERIEEVTKKGNEAVASRDLS ENNDQRQQLQALSEPQPRQLQ AAGLPHTEVVQGGKGNVLGNS KSQTPAPSSSEVLDSKRQVE KEETNEIQVVNEEPQRDRLP QEPGREQVVEDRPVGGRRFG GAGELGQTPQVQAALSVSQE NPEMEGPERDQLVIPDGQEE EQEAAGEGRNQKLRGEDD
Specificity	Recombinant fusion protein containing a sequence corresponding to amino acids 112-401 of human GOLPH2 (NP_057632.2).

ADDITIONAL INFORMATION

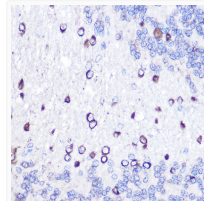
Note STRICTLY FOR FURTHER SCIENTIFIC RESEARCH USE ONLY (RUO). MUST NOT TO BE USED IN DIAGNOSTIC OR THERAPEUTIC APPLICATIONS.



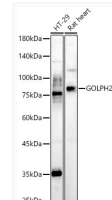
Immunofluorescence analysis of U2OS cells using GOLPH2 Rabbit polyclonal antibody (STJ29422) at dilution of 1:100 (40x lens). Blue: DAPI for nuclear staining.



Immunohistochemistry analysis of paraffin-embedded human colon carcinoma using GOLPH2 Rabbit polyclonal antibody (STJ29422) at dilution of 1:100 (40x lens). Perform microwave antigen retrieval with 10 mM Tris/EDTA buffer pH 9.0 before commencing with immunohistochemistry staining protocol.



Immunohistochemistry analysis of paraffin-embedded rat brain using GOLPH2 Rabbit polyclonal antibody (STJ29422) at dilution of 1:100 (40x lens). Perform microwave antigen retrieval with 10 mM Tris/EDTA buffer pH 9.0 before commencing with immunohistochemistry staining protocol.



Western blot analysis of various lysates, using GOLPH2 antibody (STJ29422) at 1:1000 dilution. Secondary antibody: HRP Goat Anti-Rabbit IgG (H+L) (STJS000856) at 1:10000 dilution. Lysates/proteins: 25 µg per lane. Blocking buffer: 3% nonfat dry milk in TBST. Detection: ECL Basic Kit. Exposure time: 180s.