

Anti-GCM1 antibody (207-436) (STJ29421)

GENERAL INFORMATION

Product Type	Primary antibodies
Applications	WB/IF/ICC/ELISA
Host / Source	Rabbit
Reactivity	Human

PRODUCT PROPERTIES

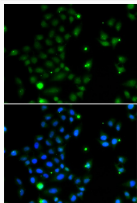
Clonality	Polyclonal
Concentration	Lot specific
Conjugation	Unconjugated
Purification	Affinity purification
Dilution Range	WB:1:500-1:2000 IF/CC:1:50-1:100 ELISA:Recommended starting concentration is 1 Mu g/mL. Please optimize the concentration based on your specific assay requirements.
Formulation	PBS with 0.02% Sodium Azide, 50% Glycerol, pH 7.3.
Isotype	IgG
Molecular Weight	Protein Mw: 49kDa Observed Mw: Refer to figures
Storage Instruction	Store at -20°C for up to 1 year from the date of receipt, and avoid repeat freeze-thaw cycles.

TARGET INFORMATION

Gene ID	8521
Gene Symbol	GCM1
UniProt ID	GCM1_HUMAN
Immunogen Region	207-436
Immunogen Sequence	SFQEGVQLPGSYSGLHANT PQQNSLNDGCFSSKSYGLGG ITDLTDQTSTVDPMKLYEKR KLSSTRTYSSGDLPPSASG VYSDHGDQLQAWSKNAALGRN HLDNCYSNYPFPLTSWPCS FSPSQNSSEPFYQQLPLEPP AAKTGCPPLWPNPAGNLYEE KVHVDFNSYVQSPAYHSPQE DPFLFTYASHPHQQYSLPSK SSKWDFEEEMTYLGLDHCNN DMLLNLCLPLR
Specificity	Recombinant fusion protein containing a sequence corresponding to amino acids 207-436 of human GCM1 (NP_003634.2).

ADDITIONAL INFORMATION

Note	STRICTLY FOR FURTHER SCIENTIFIC RESEARCH USE ONLY (RUO). MUST NOT TO BE USED IN DIAGNOSTIC OR THERAPEUTIC APPLICATIONS.
------	---



Immunofluorescence analysis of MCF-7 cells using GCM1 antibody (STJ29421). Blue: DAPI for nuclear staining.