

Anti-ATOH7 antibody (47-152) (STJ29412)

GENERAL INFORMATION

Product Type	Primary antibodies
Applications	WB/IF/ICC/ELISA
Host / Source	Rabbit
Reactivity	Human

PRODUCT PROPERTIES

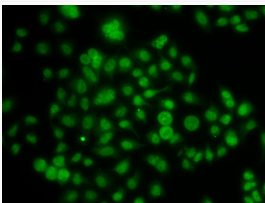
Clonality	Polyclonal
Concentration	Lot specific
Conjugation	Unconjugated
Purification	Affinity purification
Dilution Range	WB:1:500-1:2000 IF/CC:1:50-1:100 ELISA:Recommended starting concentration is 1 µg/mL. Please optimize the concentration based on your specific assay requirements.
Formulation	PBS with 0.02% Sodium Azide, 50% Glycerol, pH 7.3.
Isotype	IgG
Molecular Weight	Protein Mw: 17kDa Observed Mw: Refer to figures
Storage Instruction	Store at -20°C for up to 1 year from the date of receipt, and avoid repeat freeze-thaw cycles.

TARGET INFORMATION

Gene ID	220202
Gene Symbol	ATOH7
UniProt ID	ATOH7_HUMAN
Immunogen Region	47-152
Immunogen Sequence	ARERRRMQGLNTAFDRLRRV VPQWGQDKKLSKYETLQMAL SYIMALTRILAEAEERFGSER DWVGLHCEHFGRDHLYLPFG AKLPGESELYSQRLFGFQPE PFMAT
Specificity	Recombinant fusion protein containing a sequence corresponding to amino acids 47-152 of human ATOH7 (NP_660161.1).

ADDITIONAL INFORMATION

Note STRICTLY FOR FURTHER SCIENTIFIC RESEARCH USE ONLY (RUO). MUST NOT TO BE USED IN DIAGNOSTIC OR THERAPEUTIC APPLICATIONS.



Immunofluorescence analysis of A-549 cells using ATOH7 Rabbit polyclonal antibody (STJ29412). Secondary antibody: Cy3 Goat Anti-Rabbit IgG (H+L) at 1:500 dilution.