

## Anti-ATMIN antibody (160-360) (STJ29411)

### GENERAL INFORMATION

Product Type	Primary antibodies
Applications	WB/IF/ICC/ELISA
Host / Source	Rabbit
Reactivity	Human/Mouse/Rat

### PRODUCT PROPERTIES

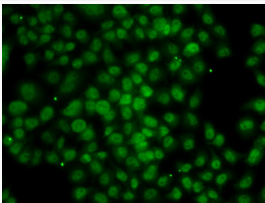
Clonality	Polyclonal
Concentration	Lot specific
Conjugation	Unconjugated
Purification	Affinity purification
Dilution Range	WB:1:500-1:2000 IF/CC:1:50-1:100 ELISA:Recommended starting concentration is 1 $\mu$ g/mL. Please optimize the concentration based on your specific assay requirements.
Formulation	PBS with 0.02% Sodium Azide, 50% Glycerol, pH 7.3.
Isotype	IgG
Molecular Weight	Protein Mw: 88kDa Observed Mw: 68-88kDa
Storage Instruction	Store at -20°C for up to 1 year from the date of receipt, and avoid repeat freeze-thaw cycles.

### TARGET INFORMATION

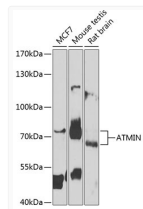
Gene ID	<a href="#">23300</a>
Gene Symbol	<a href="#">ATMIN</a>
UniProt ID	<a href="#">ATMIN_HUMAN</a>
Immunogen Region	160-360
Immunogen Sequence	HAEEKHKCSKCSNSYGTWED LKRHAEDCGKTRCTCGCPY ASRTALQSHIYRTGHEIPAE HRDPPSKKRKMENCAQNQKL SNKTIESLNNQPIPRPDTQE LEASEIKLEPSFEDSCGSNT DKQTLTTPPRYPQKLLLPKP KVALVKLPVMQFSVMPVFVP TADSSAQPVVLGVDQGSATG AVHLMPLSVGTLILGLDSEA C
Specificity	Recombinant fusion protein containing a sequence corresponding to amino acids 160-360 of human ATMIN (NP_056066.2).

### ADDITIONAL INFORMATION

Note STRICTLY FOR FURTHER SCIENTIFIC RESEARCH USE ONLY (RUO). MUST NOT TO BE USED IN DIAGNOSTIC OR THERAPEUTIC APPLICATIONS.



Immunofluorescence analysis of MCF-7 cells using ATMIN antibody (STJ29411).



Western blot analysis of extracts of various cell lines, using ATMIN antibody (STJ29411) at 1:1000 dilution. \_Secondary antibody: HRP Goat Anti-Rabbit IgG (H+L) (STJS000856) at 1:10000 dilution. \_Lysates/proteins: 25  $\mu$ g per lane. \_Blocking buffer: 3% nonfat dry milk in TBST. \_Detection: ECL Enhanced Kit. \_Exposure time: 90s.