

Anti-EGR1 antibody (1-250) (STJ29407)

GENERAL INFORMATION

Product Type	Primary antibodies
Applications	WB/ELISA
Host / Source	Rabbit
Reactivity	Human/Mouse/Rat

PRODUCT PROPERTIES

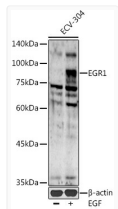
Clonality	Polyclonal
Concentration	Lot specific
Conjugation	Unconjugated
Purification	Affinity purification
Dilution Range	WB:1:500-1:1000 ELISA:Recommended starting concentration is 1 µg/mL. Please optimize the concentration based on your specific assay requirements.
Formulation	PBS with 0.01% Thimerosal, 50% Glycerol, pH 7.3.
Isotype	IgG
Molecular Weight	Protein Mw: 58kDa Observed Mw: 75-80kDa
Storage Instruction	Store at -20°C for up to 1 year from the date of receipt, and avoid repeat freeze-thaw cycles.

TARGET INFORMATION

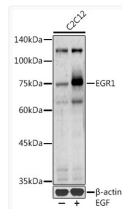
Gene ID	1958
Gene Symbol	EGR1
UniProt ID	EGR1_HUMAN
Immunogen Region	1-250
Immunogen Sequence	MAAAKAEMQLMSPLOISDPF GSFPHSPTMDNYPKLEEMML LSNAGAPQFLGAAGAPEGSGS NSSSSSSGGGGGGGGSSSS SSSSTFNPOADTGEQPYEHL TAESFDPDISLNNEKVLVETS YPSQTRRLPPITYTGRFSLP PAPNSGNTLWPEPLFSLVSG LVSMTNPPASSSSAPSPAAS SASASQSPPLSCAVPSNDSS PIYSAAPTFTPTNDIFPEP QSQAFPGSAGTALQYPPPA
Specificity	Recombinant fusion protein containing a sequence corresponding to amino acids 1-250 of human EGR1 (NP_001955.1).

ADDITIONAL INFORMATION

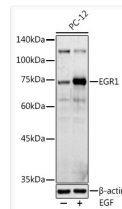
Note **STRICTLY FOR FURTHER SCIENTIFIC RESEARCH USE ONLY (RUO). MUST NOT TO BE USED IN DIAGNOSTIC OR THERAPEUTIC APPLICATIONS.**



Western blot analysis of lysates from ECV-304 cells, using EGR1 Rabbit pAb (STJ29407) at 1:1000 dilution. ECV-304 cells were treated by EGF (100 ng/ml) at 37 °C for 30 minutes after serum-starvation overnight.
Secondary antibody: HRP-conjugated Goat anti-Rabbit IgG (H+L) (STJS000856) at 1:10000 dilution.
Lysates/proteins: 25 µg per lane.
Blocking buffer: 3% nonfat dry milk in TBST.
Detection: ECL Basic Kit
Exposure time: 180s.



Western blot analysis of lysates from C2C12 cells, using EGR1 Rabbit pAb (STJ29407) at 1:1000 dilution. C2C12 cells were treated by EGF (100 ng/ml) at 37 °C for 30 minutes after serum-starvation overnight.
Secondary antibody: HRP-conjugated Goat anti-Rabbit IgG (H+L) (STJS000856) at 1:10000 dilution.
Lysates/proteins: 25 µg per lane.
Blocking buffer: 3% nonfat dry milk in TBST.
Detection: ECL Basic Kit
Exposure time: 90s.



Western blot analysis of lysates from PC-12 cells, using EGR1 Rabbit pAb (STJ29407) at 1:1000 dilution. PC-12 cells were treated by EGF (100 ng/ml) at 37 °C for 30 minutes after serum-starvation overnight.
Secondary antibody: HRP-conjugated Goat anti-Rabbit IgG (H+L) (STJS000856) at 1:10000 dilution.
Lysates/proteins: 25 µg per lane.
Blocking buffer: 3% nonfat dry milk in TBST.
Detection: ECL Basic Kit
Exposure time: 90s.