

## Anti-Acetyl-Histone H3-K56 antibody (STJ29398)

### GENERAL INFORMATION

Product Type	Primary antibodies
Applications	WB/IF/ICC/ELISA/ChIP
Host / Source	Rabbit
Reactivity	Human/Mouse/Rat/Other

### PRODUCT PROPERTIES

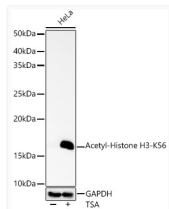
Clonality	Polyclonal
Concentration	Lot specific
Conjugation	Unconjugated
Purification	Affinity purification
Dilution Range	WB:1:500-1:1000 IF/CC:1:50-1:200 ELISA:Recommended starting concentration is 1 Mu g/mL. Please optimize the concentration based on your specific assay requirements. ChIP:5 Mu g antibody for 5 Mu g-10 Mu g of Chromatin
Formulation	PBS with 0.09% Sodium Azide, 50% Glycerol, pH 7.3.
Isotype	IgG
Molecular Weight	Protein Mw: 16kDa Observed Mw: 17kDa
Storage Instruction	Store at -20°C for up to 1 year from the date of receipt, and avoid repeat freeze-thaw cycles.

### TARGET INFORMATION

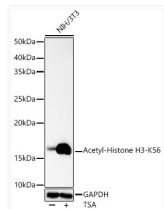
Gene ID	<a href="#">8350/8351/8352/8353/8354/8355/8356/8357/8358/8968/8290</a>
Gene Symbol	<a href="#">H3C1.H3C2.H3C3.H3C4.H3C6.H3C7.H3C8.H3C10.H3C11.H3C12</a> <a href="#">H31_HUMAN</a> <a href="#">H31T_HUMAN</a>
Immunogen Sequence	YQKST
Specificity	A synthetic acetylated peptide around K56 of human Histone H3 (NP_003520.1).

### ADDITIONAL INFORMATION

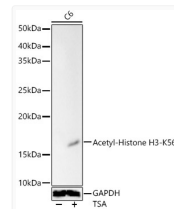
Note STRICTLY FOR FURTHER SCIENTIFIC RESEARCH USE ONLY (RUO). MUST NOT TO BE USED IN DIAGNOSTIC OR THERAPEUTIC APPLICATIONS.



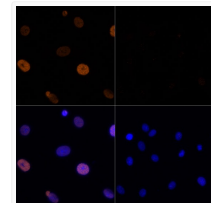
Western blot analysis of HeLa, using Acetyl-Histone H3-K56 rabbit polyclonal antibody (STJ29398) at 1:10000 dilution. HeLa cells were treated by TSA (1  $\mu$ M) at 37 °C for 18 hours. Secondary antibody: HRP Goat Anti-rabbit IgG (H+L) (STJS000856) at 1:10000 dilution. Lysates/proteins: 25 Mu g per lane. Blocking buffer: 3% non-fat dry milk in TBST. Detection: ECL Basic Kit. Exposure time: 30s.



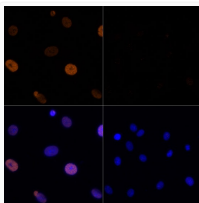
Western blot analysis of NIH/3T3, using Acetyl-Histone H3-K56 rabbit polyclonal antibody (STJ29398) at 1:10000 dilution. NIH/3T3 cells were treated by TSA (1  $\mu$ M) at 37 °C for 18 hours. Secondary antibody: HRP Goat Anti-rabbit IgG (H+L) (STJS000856) at 1:10000 dilution. Lysates/proteins: 25 Mu g per lane. Blocking buffer: 3% non-fat dry milk in TBST. Detection: ECL Basic Kit. Exposure time: 30s.



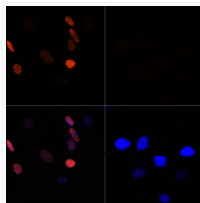
Western blot analysis of C6, using Acetyl-Histone H3-K56 rabbit polyclonal antibody (STJ29398) at 1:10000 dilution. C6 cells were treated by TSA (1  $\mu$ M) at 37 °C for 18 hours. Secondary antibody: HRP Goat Anti-rabbit IgG (H+L) (STJS000856) at 1:10000 dilution. Lysates/proteins: 25 Mu g per lane. Blocking buffer: 3% non-fat dry milk in TBST. Detection: ECL Basic Kit. Exposure time: 30s.



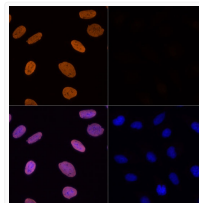
Immunofluorescence analysis of C6 treated by TSA jia C6 cells using Acetyl-Histone H3-K56 rabbit polyclonal antibody (STJ29398) at dilution of 100 (40x lens). Blue: DAPI for nuclear staining.



Immunofluorescence analysis of NIH-3T3 treated by TSA jia NIH-3T3 cells using Acetyl-Histone H3-K56 rabbit polyclonal antibody (STJ29398) at dilution of 100 (40x lens). Blue: DAPI for nuclear staining.



Immunofluorescence analysis of U-2 OS treated by TSA jia U-2 OS cells using Acetyl-Histone H3-K56 rabbit polyclonal antibody (STJ29398) at dilution of 100 (40x lens). Blue: DAPI for nuclear staining.



Chromatin immunoprecipitation analysis of extracts of HeLa cells, using Acetyl-Histone H3-K56 antibody (STJ29398) and rabbit IgG. The amount of immunoprecipitated DNA was checked by quantitative PCR. Histogram was constructed by the ratios of the immunoprecipitated DNA to the input.

