

Anti-UIMC1 antibody (1-150) (STJ29387)

GENERAL INFORMATION

Product Type	Primary antibodies
Applications	WB/IF/ICC/ELISA
Host / Source	Rabbit
Reactivity	Human/Mouse/Rat

PRODUCT PROPERTIES

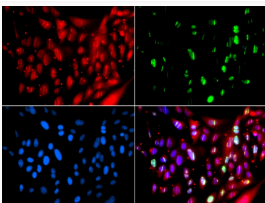
Clonality	Polyclonal
Concentration	Lot specific
Conjugation	Unconjugated
Purification	Affinity purification
Dilution Range	WB:1:500-1:2000 IF/CC:1:50-1:100 ELISA:Recommended starting concentration is 1 Mu g/mL. Please optimize the concentration based on your specific assay requirements.
Formulation	PBS with 0.02% Sodium Azide, 50% Glycerol, pH7.3.
Isotype	IgG
Molecular Weight	Protein Mw: 80kDa Observed Mw: 120kDa/100kDa
Storage Instruction	Store at -20°C for up to 1 year from the date of receipt, and avoid repeat freeze-thaw cycles.

TARGET INFORMATION

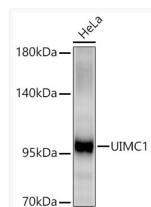
Gene ID	51720
Gene Symbol	UIMC1
UniProt ID	UIMC1_HUMAN
Immunogen Region	1-150
Immunogen Sequence	MPRRKKKVKEVSESRNLEKK DVETTSSVSVKRRRLEDAF IVISDSDGEEPKEENGLQKT KTKQSNRAKCLAKRKIAQMT EEEQFALALKMSEQEAREVN SQEEEEELLRKAIAESLNS CRPSDASATRSRPLATGPSS QSHQEKTDS
Specificity	Recombinant fusion protein containing a sequence corresponding to amino acids 1-150 of human UIMC1 (NP_057374.3).

ADDITIONAL INFORMATION

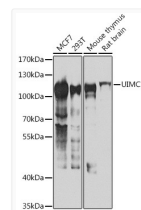
Note **STRICTLY FOR FURTHER SCIENTIFIC RESEARCH USE ONLY (RUO). MUST NOT TO BE USED IN DIAGNOSTIC OR THERAPEUTIC APPLICATIONS.**



Immunofluorescence analysis of GFP-RNF168 transgenic U2OS cells using UIMC1 Rabbit polyclonal antibody (STJ29387). Green: GFP-RNF168 fusion protein expression for DNA damage marker. Secondary antibody: Cy3 Goat Anti-Rabbit IgG (H+L) at 1:500 dilution. Blue: DAPI for nuclear staining. RNF168 (GFP) can be used to mark cells damaged by UV-A laser for they always gather around DNA damage region.



Western blot analysis of lysates from HeLa cells using UIMC1 Rabbit polyclonal antibody (STJ29387) at 1:3000 dilution incubated overnight at 4 °C. Secondary antibody: HRP-conjugated Goat anti-Rabbit IgG (H+L) (STJS000856) at 1:10000 dilution. Lysates/proteins: 25 Mu g per lane. Blocking buffer: 3% nonfat dry milk in TBST. Detection: ECL Basic Kit. Exposure time: 60 s.



Western blot analysis of various lysates using UIMC1 Rabbit polyclonal antibody (STJ29387) at 1:1000 dilution. Secondary antibody: HRP Goat Anti-Rabbit IgG (H+L) (STJS000856) at 1:10000 dilution. Lysates/proteins: 25 Mu g per lane. Blocking buffer: 3% nonfat dry milk in TBST. Detection: ECL Basic Kit. Exposure time: 30s.