

Anti-POLD3 antibody (197-466) (STJ29386)

GENERAL INFORMATION

| | |
|---------------|-----------------------|
| Product Type | Primary antibodies |
| Applications | WB/IHC-P/IF/ICC/ELISA |
| Host / Source | Rabbit |
| Reactivity | Human/Mouse |

PRODUCT PROPERTIES

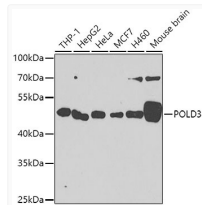
| | |
|---------------------|---|
| Clonality | Polyclonal |
| Concentration | Lot specific |
| Conjugation | Unconjugated |
| Purification | Affinity purification |
| Dilution Range | WB:1:500-1:2000 IHC-P:1:100-1:500 IF/CC:1:50-1:100 ELISA:Recommended starting concentration is 1 Mu g/mL. Please optimize the concentration based on your specific assay requirements. |
| Formulation | PBS with 0.02% Sodium Azide, 50% Glycerol, pH 7.3. |
| Isotype | IgG |
| Molecular Weight | Protein Mw: 51kDa Observed Mw: 51kDa |
| Storage Instruction | Store at -20°C for up to 1 year from the date of receipt, and avoid repeat freeze-thaw cycles. |

TARGET INFORMATION

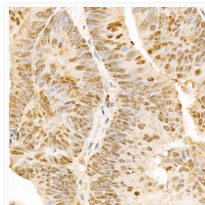
| | |
|--------------------|---|
| Gene ID | 10714 |
| Gene Symbol | POLD3 |
| UniProt ID | DPOD3_HUMAN |
| Immunogen Region | 197-466 |
| Immunogen Sequence | ASKAAAKTQETNKETKTEAK EVTNASAAGNKAPGKGNMMS NFFGKAAMNKFVNLNLDSEQA VKEEKIVEQPTVSVTEPKLA TPAGLKKSSKKAEPVKVLQK EKKRGKRVALSDDDETKETEN MRKKRRRIKLPESDSEDEV FPDSPGAYEAESPSPPPPPS PPLEPVPKTEPEPPSVKSSS GENKRKRKRVLKSKTYLDGE GCIVTEKVYESECTDSEEE LNMKTSSVHRPPAMTVKKE |
| Specificity | Recombinant fusion protein containing a sequence corresponding to amino acids 197-466 of human POLD3 (NP_006582.1). |

ADDITIONAL INFORMATION

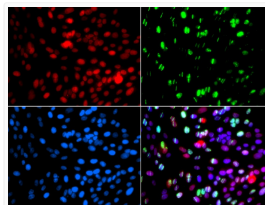
Note STRICTLY FOR FURTHER SCIENTIFIC RESEARCH USE ONLY (RUO). MUST NOT TO BE USED IN DIAGNOSTIC OR THERAPEUTIC APPLICATIONS.



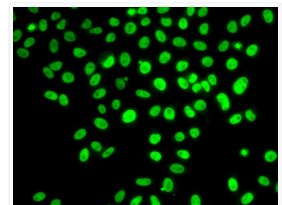
Western blot analysis of extracts of various cell lines, using POLD3 antibody (STJ29386) at 1:1000 dilution. Secondary antibody: HRP Goat Anti-rabbit IgG (H+L) (STJS000856) at 1:10000 dilution. Lysates/proteins: 25 Mu g per lane. Blocking buffer: 3% non-fat dry milk in TBST. Detection: ECL Enhanced Kit. Exposure time: 60s.



Immunohistochemistry analysis of paraffin-embedded human colon carcinoma using POLD3 rabbit polyclonal antibody (STJ29386) at dilution of 1:300 (40x lens). Perform microwave antigen retrieval with 10 mM PBS buffer pH 7. 2 before commencing with immunohistochemistry staining protocol.



Immunofluorescence analysis of GFP-RNF168 transgenic U2OS cells using POLD3 antibody (STJ29386). Green:GFP-RNF168 fusion protein expression for DNA damage marker. Blue: DAPI for nuclear staining. RNF168 (GFP) can be used to mark cells damaged by UV-A laser for they always gather around DNA damage region.



Immunofluorescence analysis of U2OS cells using POLD3 antibody (STJ29386).