

## Anti-Pan-Phospho-PKC Gamma-T514 antibody (STJ29379)

### GENERAL INFORMATION

Product Type	Primary antibodies
Applications	WB/ELISA
Host / Source	Rabbit
Reactivity	Human/Mouse/Rat

### PRODUCT PROPERTIES

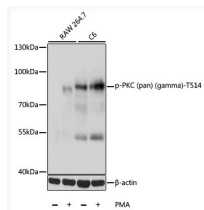
Clonality	Polyclonal
Concentration	Lot specific
Conjugation	Unconjugated
Purification	Affinity purification
Dilution Range	WB:1:500-1:2000 ELISA:Recommended starting concentration is 1 µg/mL. Please optimize the concentration based on your specific assay requirements.
Formulation	PBS with 0.02% Sodium Azide, 50% Glycerol, pH 7.3.
Isotype	IgG
Molecular Weight	Protein Mw: 59-67kDa/74-83kDa Observed Mw: 80kDa
Storage Instruction	Store at -20°C for up to 1 year from the date of receipt, and avoid repeat freeze-thaw cycles.

### TARGET INFORMATION

Gene ID	<a href="#">5581</a> <a href="#">5580</a> <a href="#">5583</a> <a href="#">PRKCE</a> <a href="#">PRKCD</a> <a href="#">KPCE_HUMAN</a> <a href="#">KPCD_HUMAN</a> <a href="#">KPCL_HUMAN</a>
Immunogen Sequence	YQPYG
Specificity	A synthetic phosphorylated peptide around T514 of human PKC (pan) (gamma) PRKCA (NP_002728.2).

### ADDITIONAL INFORMATION

Note STRICTLY FOR FURTHER SCIENTIFIC RESEARCH USE ONLY (RUO). MUST NOT TO BE USED IN DIAGNOSTIC OR THERAPEUTIC APPLICATIONS.



Western blot analysis of various lysates using Phospho-PKC (pan) (gamma) -T514 Rabbit pAb (STJ29379) at 1:1000 dilution. RAW 264.7 cells were treated by PMA (200 nM) for 30 minutes. C6 cells were treated by PMA/TPA (200nM) for 30 minutes after serum-starvation overnight.

Secondary antibody: HRP-conjugated Goat anti-Rabbit IgG (H+L) (STJS000856) at 1:10000 dilution.

Lysates/proteins: 25 µg per lane.  
Blocking buffer: 3% BSA.  
Detection: ECL Basic Kit  
Exposure time: 10s.