

Anti-Phospho-CTNNB1-S552 antibody (STJ29345)

GENERAL INFORMATION

Product Type	Primary antibodies
Applications	WB/ELISA
Host / Source	Rabbit
Reactivity	Human/Mouse/Rat

PRODUCT PROPERTIES

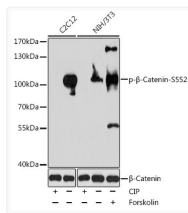
Clonality	Polyclonal
Concentration	Lot specific
Conjugation	Unconjugated
Purification	Affinity purification
Dilution Range	WB:1:500-1:2000 ELISA:Recommended starting concentration is 1 Mu g/mL. Please optimize the concentration based on your specific assay requirements.
Formulation	PBS with 0.02% Sodium Azide, 50% Glycerol, pH 7.3.
Isotype	IgG
Molecular Weight	Protein Mw: 85kDa Observed Mw: 106kDa
Storage Instruction	Store at -20°C for up to 1 year from the date of receipt, and avoid repeat freeze-thaw cycles.

TARGET INFORMATION

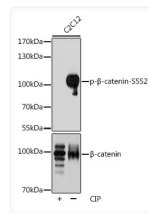
Gene ID	1499
Gene Symbol	CTNNB1
UniProt ID	CTNB1_HUMAN
Immunogen Sequence	RTSMG
Specificity	A synthetic phosphorylated peptide around S552 of human beta Catenin (NP_001091679).

ADDITIONAL INFORMATION

Note **STRICTLY FOR FURTHER SCIENTIFIC RESEARCH USE ONLY (RUO). MUST NOT TO BE USED IN DIAGNOSTIC OR THERAPEUTIC APPLICATIONS.**



Western blot analysis of various lysates using Phospho-Beta-Catenin-S552 Rabbit pAb (STJ29345) at 1:1000 dilution. C2C12 cell lysates were treated by CIP at 37°C for 1 hour. NIH/3T3 cells were treated by Forskolin (30uM) for 30 minutes after serum-starvation overnight or treated by CIP at 37°C for 1 hour. Secondary antibody: HRP-conjugated Goat anti-Rabbit IgG (H+L) (STJS000856) at 1:10000 dilution. Lysates/proteins: 25 Mu g per lane. Blocking buffer: 3% BSA. Detection: ECL Enhanced Kit Exposure time: 30s.



Western blot analysis of lysates from C2C12 cells, using Phospho-Beta-Catenin-S552 pAb (STJ29345) at 1:1000 dilution or Beta-Catenin antibody (STJ239402). C2C12 cell lysates were treated by CIP at 37°C for 1 hour. Secondary antibody: HRP-conjugated Goat anti-Rabbit IgG (H+L) (STJS000856) at 1:10000 dilution. Lysates/proteins: 25 Mu g per lane. Blocking buffer: 3% BSA. Detection: ECL Enhanced Kit Exposure time: 30s.