

Anti-SLC35A2 antibody (1-242) (STJ29313)

GENERAL INFORMATION

Product Type	Primary antibodies
Applications	IF/ICC/ELISA
Host / Source	Rabbit
Reactivity	Human

PRODUCT PROPERTIES

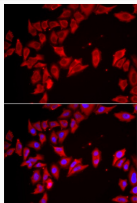
Clonality	Polyclonal
Concentration	Lot specific
Conjugation	Unconjugated
Purification	Affinity purification
Dilution Range	IF/ICC:1:50-1:200 ELISA:Recommended starting concentration is 1 µg/mL. Please optimize the concentration based on your specific assay requirements.
Formulation	PBS with 0.02% Sodium Azide, 50% Glycerol, pH 7.3.
Isotype	IgG
Molecular Weight	Protein Mw: 41kDa Observed Mw: Refer to figures
Storage Instruction	Store at -20°C for up to 1 year from the date of receipt, and avoid repeat freeze-thaw cycles.

TARGET INFORMATION

Gene ID	7355
Gene Symbol	SLC35A2
UniProt ID	S35A2_HUMAN
Immunogen Region	1-242
Immunogen Sequence	MAAVGAGGSTAAPGPGAVSA GALEPGTASAAHRRLLKYISL AVLVVQNASLILSIRYARTL PGDRFFATTAVVMAEVLKGL TLLLLLFAQKRGNVKHLVLF LHEAVLVQYVDTLKLAVPSL IYTLQNNLQYVAISNLPAAAT FQPSPRCSQSHSLCLCLRLR ALRSPAASRAATTTAAVFPP WRPHHGALS AKVSAGEVRAG SNGGTQGRGTGVEGVGHLQD PSRHPPGPGSSGFGRWSFL
Specificity	Recombinant fusion protein containing a sequence corresponding to amino acids 1-242 of human SLC35A2 (NP_001027460.1).

ADDITIONAL INFORMATION

Note STRICTLY FOR FURTHER SCIENTIFIC RESEARCH USE ONLY (RUO). MUST NOT TO BE USED IN DIAGNOSTIC OR THERAPEUTIC APPLICATIONS.



Immunofluorescence analysis of HeLa cells using SLC35A2 antibody (STJ29313). Blue: DAPI for nuclear staining.