

Anti-PHIP antibody (1542-1821) (STJ29287)

GENERAL INFORMATION

| | |
|---------------|-----------------------|
| Product Type | Primary antibodies |
| Applications | WB/IHC-P/IF/ICC/ELISA |
| Host / Source | Rabbit |
| Reactivity | Human/Mouse |

PRODUCT PROPERTIES

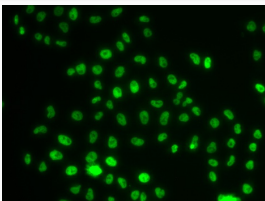
| | |
|---------------------|--|
| Clonality | Polyclonal |
| Concentration | Lot specific |
| Conjugation | Unconjugated |
| Purification | Affinity purification |
| Dilution Range | WB:1:500-1:2000 IHC-P:1:50-1:200 IF/CC:1:50-1:100 ELISA:Recommended starting concentration is 1 Mu g/mL. Please optimize the concentration based on your specific assay requirements. |
| Formulation | PBS with 0.02% Sodium Azide, 50% Glycerol, pH 7.3. |
| Isotype | IgG |
| Molecular Weight | Protein Mw: 207kDa Observed Mw: 250kDa |
| Storage Instruction | Store at -20°C for up to 1 year from the date of receipt, and avoid repeat freeze-thaw cycles. |

TARGET INFORMATION

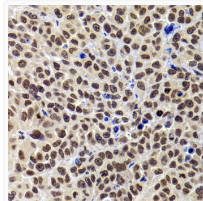
| | |
|--------------------|--|
| Gene ID | 55023 |
| Gene Symbol | PHIP |
| UniProt ID | PHIP_HUMAN |
| Immunogen Region | 1542-1821 |
| Immunogen Sequence | KTILENSVKHSKALNTLSSP GQSSFHSGTRNNSAKENMEK EKPVKRKMKSSVLPKASTLS KSSAVIEQGDCCKNNALVPGT IQVNGHGGQPSKLVKRGPGR KPKVEVNTNSGEIHKRGR KPKKLQYAKPEDLEQNNVHP IRDEVLPSSTCNFLSETNNV KEDLLQKKNRGGRKPKRKMK TQKLDADLLVPASVKVLRRS NRKKIDDPIDEEEEFEELKG SEPHMRTRNQGRRTAFYNE |
| Specificity | Recombinant fusion protein containing a sequence corresponding to amino acids 1542-1821 of human PHIP (NP_060404.3). |

ADDITIONAL INFORMATION

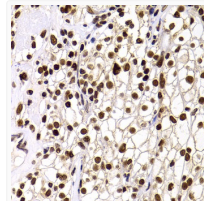
Note STRICTLY FOR FURTHER SCIENTIFIC RESEARCH USE ONLY (RUO). MUST NOT TO BE USED IN DIAGNOSTIC OR THERAPEUTIC APPLICATIONS.



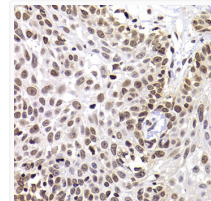
Immunofluorescence analysis of MCF-7 cells using PHIP antibody (STJ29287).



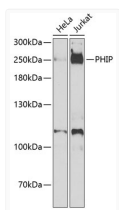
Immunohistochemistry analysis of paraffin-embedded mouse tumor using PHIP antibody (STJ29287) at dilution of 1:100 (40x lens). Perform microwave antigen retrieval with 10 mM PBS buffer pH 7. 2 before commencing with immunohistochemistry staining protocol.



Immunohistochemistry analysis of paraffin-embedded human kidney cancer using PHIP antibody (STJ29287) at dilution of 1:100 (40x lens). Perform microwave antigen retrieval with 10 mM PBS buffer pH 7. 2 before commencing with immunohistochemistry staining protocol.



Immunohistochemistry analysis of paraffin-embedded human well-differentiated squamous skin carcinoma using PHIP antibody (STJ29287) at dilution of 1:100 (40x lens). Perform microwave antigen retrieval with 10 mM PBS buffer pH 7. 2 before commencing with immunohistochemistry staining protocol.



Western blot analysis of extracts of various cell lines, using PHIP antibody (STJ29287) at 1:1000 dilution. _Secondary antibody: HRP Goat Anti-Rabbit IgG (H+L) (STJS000856) at 1:10000 dilution. _Lysates/proteins: 25 Mu g per lane. _Blocking buffer: 3% nonfat dry milk in TBST. _Detection: ECL Enhanced Kit. _Exposure time: 90s.