

Anti-MAP1LC3B antibody (1-100) (STJ29278)

GENERAL INFORMATION

Product Type	Primary antibodies
Applications	WB/IHC-P/IF/ICC/ELISA
Host / Source	Rabbit
Reactivity	Human/Mouse/Rat

PRODUCT PROPERTIES

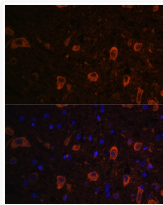
Clonality	Polyclonal
Concentration	Lot specific
Conjugation	Unconjugated
Purification	Affinity purification
Dilution Range	WB:1:500-1:1000 IHC-P:1:50-1:200 IF/ICC:1:50-1:200 ELISA:Recommended starting concentration is 1 Mu g/mL. Please optimize the concentration based on your specific assay requirements.
Formulation	PBS with 0.09% Sodium Azide, 50% Glycerol, pH7.3.
Isotype	IgG
Molecular Weight	Protein Mw: 15kDa Observed Mw: 14kDa/16kDa
Storage Instruction	Store at -20°C for up to 1 year from the date of receipt, and avoid repeat freeze-thaw cycles.

TARGET INFORMATION

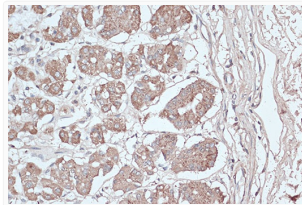
Gene ID	81631
Gene Symbol	MAP1LC3B
UniProt ID	MLP3B_HUMAN
Immunogen Region	1-100
Immunogen Sequence	MPSEKTFKQRRTFEQRVEDV RLIREQHPTKIPVIERYKG EKQLPVLDTKFLVPDHVNM SELIKIIRRRRLQLNANQAFF LLVNGHSMVSVSTPISEVYE
Specificity	A synthetic peptide corresponding to a sequence within amino acids 1-100 of human LC3B (NP_073729.1).

ADDITIONAL INFORMATION

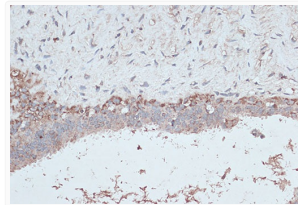
Note STRICTLY FOR FURTHER SCIENTIFIC RESEARCH USE ONLY (RUO). MUST NOT TO BE USED IN DIAGNOSTIC OR THERAPEUTIC APPLICATIONS.



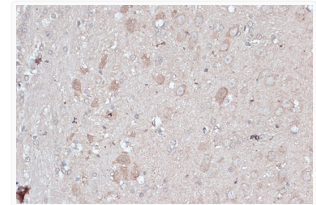
Immunofluorescence analysis of paraffin-embedded rat brain using [KD Validated] LC3B Rabbit polyclonal antibody (STJ29278) at dilution of 1:100. Secondary antibody: Cy3 Goat Anti-Rabbit IgG (H+L) at 1:500 dilution. Blue: DAPI for nuclear staining.



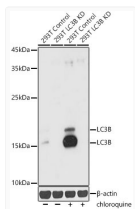
Immunohistochemistry analysis of LC3B in paraffin-embedded human stomach using [KD Validated] LC3B Rabbit polyclonal antibody (STJ29278) at dilution of 1:100 (40x lens). Perform microwave antigen retrieval with 10 mM PBS buffer pH 7. 2 before commencing with immunohistochemistry staining protocol.



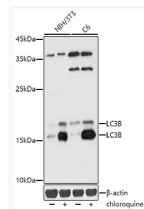
Immunohistochemistry analysis of LC3B in paraffin-embedded human breast cancer using [KD Validated] LC3B Rabbit polyclonal antibody (STJ29278) at dilution of 1:100 (40x lens). Perform microwave antigen retrieval with 10 mM PBS buffer pH 7. 2 before commencing with immunohistochemistry staining protocol.



Immunohistochemistry analysis of LC3B in paraffin-embedded rat brain using [KD Validated] LC3B Rabbit polyclonal antibody (STJ29278) at dilution of 1:100 (40x lens). Perform microwave antigen retrieval with 10 mM PBS buffer pH 7. 2 before commencing with immunohistochemistry staining protocol.



Western blot analysis of lysates from wild type (WT) and LC3B knockdown (KD) 293T, 293T+chloroquine cells, using [KD Validated] LC3B Rabbit polyclonal antibody (STJ29278) at 1:1000 dilution. 293T cells were treated by Chloroquine (50 Mu M) at 37 °C for 20 hours. Secondary antibody: HRP Goat Anti-Rabbit IgG (H+L) (STJS000856) at 1:10000 dilution. Lysates/proteins: 25 Mu g per lane. Blocking buffer: 3% nonfat dry milk in TBST. Detection: ECL Basic Kit. Exposure time: 10s.



Western blot analysis of various lysates using [KD Validated] LC3B Rabbit polyclonal antibody (STJ29278) at 1:1000 dilution. NIH3T3 and C6 cells were treated by Chloroquine (50 Mu M) at 37 °C for 20 hours. Secondary antibody: HRP Goat Anti-Rabbit IgG (H+L) (STJS000856) at 1:10000 dilution. Lysates/proteins: 25 Mu g per lane. Blocking buffer: 3% nonfat dry milk in TBST. Detection: ECL Basic Kit. Exposure time: 1s.