

Anti-MAG antibody (20-220) (STJ29266)

GENERAL INFORMATION

Product Type	Primary antibodies
Applications	WB/ELISA
Host / Source	Rabbit
Reactivity	Human/Mouse/Rat

PRODUCT PROPERTIES

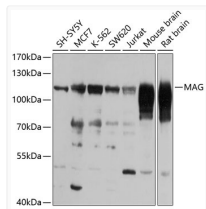
Clonality	Polyclonal
Concentration	Lot specific
Conjugation	Unconjugated
Purification	Affinity purification
Dilution Range	WB:1:500-1:3000 ELISA:Recommended starting concentration is 1 µg/mL. Please optimize the concentration based on your specific assay requirements.
Formulation	PBS with 0.02% Sodium Azide, 50% Glycerol, pH 7.3.
Isotype	IgG
Molecular Weight	Protein Mw: 69kDa Observed Mw: 120kDa
Storage Instruction	Store at -20°C for up to 1 year from the date of receipt, and avoid repeat freeze-thaw cycles.

TARGET INFORMATION

Gene ID	4099
Gene Symbol	MAG
UniProt ID	MAG_HUMAN
Immunogen Region	20-220
Immunogen Sequence	GHWGAWMPSSISAFEGTCVSI PCRFD F PDEL RPAVVHGVW YFNSPYPKNYPPVVFKSRTQ VVHESFQGRSRLLDLGLRN C TLLLSNVSPELGGKYYFRG DLGGYNQYTFSEHSVLDIVN TPNIVVPPEVVAGTEVEVSC MVPDNCPELRPELSWLGHEG LGEPAVLGRLEDEGTWVQV SLLHFVPTREANGHRLGCQA S
Specificity	Recombinant fusion protein containing a sequence corresponding to amino acids 20-220 of human MAG (P20916).

ADDITIONAL INFORMATION

Note **STRICTLY FOR FURTHER SCIENTIFIC RESEARCH USE ONLY (RUO). MUST NOT TO BE USED IN DIAGNOSTIC OR THERAPEUTIC APPLICATIONS.**



Western blot analysis of extracts of various cell lines, using MAG antibody (STJ29266) at 1:1000 dilution. Secondary antibody: HRP Goat Anti-Rabbit IgG (H+L) (STJS000856) at 1:10000 dilution. Lysates/proteins: 25 µg per lane. Blocking buffer: 3% nonfat dry milk in TBST. Detection: ECL Basic Kit. Exposure time: 1s.