

Anti-BCL6 antibody (1-280) (STJ29253)

GENERAL INFORMATION

Product Type	Primary antibodies
Applications	WB/IF/ICC/ELISA
Host / Source	Rabbit
Reactivity	Human/Mouse/Rat

PRODUCT PROPERTIES

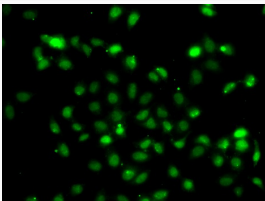
Clonality	Polyclonal
Concentration	Lot specific
Conjugation	Unconjugated
Purification	Affinity purification
Dilution Range	WB:1:500-1:1000 IF/CC:1:50-1:100 ELISA:Recommended starting concentration is 1 Mu g/mL. Please optimize the concentration based on your specific assay requirements.
Formulation	PBS with 0.05% Proclin300, 50% Glycerol, pH 7.3.
Isotype	IgG
Molecular Weight	Protein Mw: 79kDa Observed Mw: 86kDa
Storage Instruction	Store at -20°C for up to 1 year from the date of receipt, and avoid repeat freeze-thaw cycles.

TARGET INFORMATION

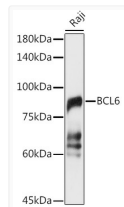
Gene ID	604
Gene Symbol	BCL6
UniProt ID	BCL6_HUMAN
Immunogen Region	1-280
Immunogen Sequence	MASPADSCIQFTRHASDVLL NLNRLRSRDILTDVVIVVSR EQFRAHKTVLMACSGLFYSI FTDQLKCNLSVINLDPEINP EGFCLLDIFYTSRLNLRREG NIMAVMATAMYLQMEHVVDI CRKFIKASEAEMVSAIKPPR EEFLNSRMLMPQDIMAYRGR EVVENNLPLRSAPGCESRAF APSLYSGLSTPPASYSMYSH LPVSSLLFSDEEFRDVRMPV ANPFPKERALPCDSARPVP
Specificity	A synthetic peptide corresponding to a sequence within amino acids 1-280 of human BCL6 (NP_001124317.1).

ADDITIONAL INFORMATION

Note STRICTLY FOR FURTHER SCIENTIFIC RESEARCH USE ONLY (RUO). MUST NOT TO BE USED IN DIAGNOSTIC OR THERAPEUTIC APPLICATIONS.



Immunofluorescence analysis of A549 cells using BCL6 antibody (STJ29253).



Western blot analysis of extracts of Raji cells, using BCL6 antibody (STJ29253) at 1:1000 dilution. Secondary antibody: HRP Goat Anti-Rabbit IgG (H+L) (STJS000856) at 1:10000 dilution. Lysates/proteins: 25 Mu g per lane. Blocking buffer: 3% nonfat dry milk in TBST. Detection: ECL Basic Kit. Exposure time: 5s.