

Anti-EIF2AK4 antibody (1-300) (STJ29235)

GENERAL INFORMATION

Product Type	Primary antibodies
Applications	WB/IF/ICC/ELISA
Host / Source	Rabbit
Reactivity	Human/Mouse/Rat

PRODUCT PROPERTIES

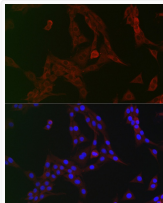
Clonality	Polyclonal
Concentration	Lot specific
Conjugation	Unconjugated
Purification	Affinity purification
Dilution Range	WB:1:500-1:1000 IF/CC:1:50-1:200 ELISA:Recommended starting concentration is 1 Mu g/mL. Please optimize the concentration based on your specific assay requirements.
Formulation	PBS with 0.05% Proclin300, 50% Glycerol, pH 7.3.
Isotype	IgG
Molecular Weight	Protein Mw: 187kDa Observed Mw: 220kDa
Storage Instruction	Store at -20°C for up to 1 year from the date of receipt, and avoid repeat freeze-thaw cycles.

TARGET INFORMATION

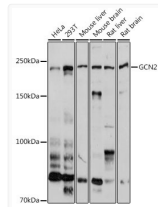
Gene ID	440275
Gene Symbol	EIF2AK4
UniProt ID	E2AK4_HUMAN
Immunogen Region	1-300
Immunogen Sequence	MAGGRGAPGRGRDEPPESYP QRQDHELQALEAIYGADFQD LRPDACGPVKPEPEINLVLY PQGLTGEEVYVKVDLRVKCP PTYPDVVPEIELKNAKGLSN ESNLLKSRLEELAKKHCGE VMIFELAYHVQSFLSEHNKP PPKSFHEEMLERRAQEEQQR LLEAKRKEEQEQREILHEIQ RRKEEIKKEEKRKEMAKQER LEIASLSNQDHTSKKDPGGH RTAAILHGGSPDFVGNKGK
Specificity	Recombinant fusion protein containing a sequence corresponding to amino acids 1-300 of human GCN2 (NP_001013725.2).

ADDITIONAL INFORMATION

Note STRICTLY FOR FURTHER SCIENTIFIC RESEARCH USE ONLY (RUO). MUST NOT TO BE USED IN DIAGNOSTIC OR THERAPEUTIC APPLICATIONS.



Immunofluorescence analysis of PC-12 cells using GCN2 Rabbit polyclonal antibody (STJ29235) at dilution of 1:100 (40x lens). Blue: DAPI for nuclear staining.



Western blot analysis of extracts of various cell lines, using GCN2 antibody (STJ29235) at 1:1000 dilution. Secondary antibody: HRP Goat Anti-Rabbit IgG (H+L) (STJS000856) at 1:10000 dilution. Lysates/proteins: 25 Mu g per lane. Blocking buffer: 3% nonfat dry milk in TBST. Detection: ECL Basic Kit. Exposure time: 90s.