

Anti-FIP1L1 antibody (1-300) (STJ29218)

GENERAL INFORMATION

Product Type	Primary antibodies
Applications	WB/IHC-P/IF/ICC/ELISA
Host / Source	Rabbit
Reactivity	Human/Mouse/Rat

PRODUCT PROPERTIES

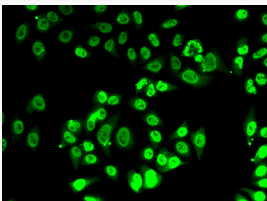
Clonality	Polyclonal
Concentration	Lot specific
Conjugation	Unconjugated
Purification	Affinity purification
Dilution Range	WB:1:500-1:2000 IHC-P:1:50-1:200 IF/ICC:1:50-1:100 ELISA:Recommended starting concentration is 1 µg/mL. Please optimize the concentration based on your specific assay requirements.
Formulation	PBS with 0.05% Proclin300, 50% Glycerol, pH7.3.
Isotype	IgG
Molecular Weight	Protein Mw: 67kDa Observed Mw: 75kDa
Storage Instruction	Store at -20°C for up to 1 year from the date of receipt, and avoid repeat freeze-thaw cycles.

TARGET INFORMATION

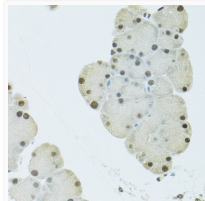
Gene ID	81608
Gene Symbol	FIP1L1
UniProt ID	FIP1_HUMAN
Immunogen Region	1-300
Immunogen Sequence	MSAGEVERLVSELSGGTGGD EEEEWLYGDENEVERPEEEN ASANPPSGIEDETAENGVPK PKVTETEDSDSDSDDEDD VHVITGDIKTGAPQYGSYGT APVNLNIKTGGRVYGTGTGK VKGVLDLAPGSINGVPLLEV DLDSFEDKPKWRKPGADLSDY FNYGFNEDTWKAYCEKQKRI RMGLEVIPVTSTTNKITAED CTMEVTPGAEIQDGRFNLFK VQQGRTGNSEKETALPSTK
Specificity	Recombinant fusion protein containing a sequence corresponding to amino acids 1-300 of human FIP1L1 (NP_001128409.1).

ADDITIONAL INFORMATION

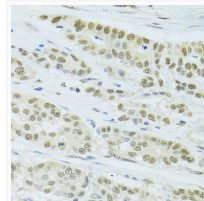
Note **STRICTLY FOR FURTHER SCIENTIFIC RESEARCH USE ONLY (RUO). MUST NOT TO BE USED IN DIAGNOSTIC OR THERAPEUTIC APPLICATIONS.**



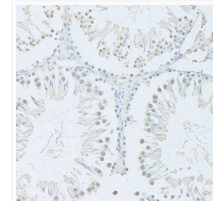
Immunofluorescence analysis of A-549 cells using FIP1L1 antibody (STJ29218).



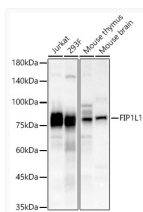
Immunohistochemistry analysis of paraffin-embedded Mouse pancreas using FIP1L1 antibody (STJ29218) at dilution of 1:100 (40x lens). Perform microwave antigen retrieval with 10 mM PBS buffer pH 7.2 before commencing with immunohistochemistry staining protocol.



Immunohistochemistry analysis of paraffin-embedded Human colon carcinoma using FIP1L1 antibody (STJ29218) at dilution of 1:100 (40x lens). Perform microwave antigen retrieval with 10 mM PBS buffer pH 7.2 before commencing with immunohistochemistry staining protocol.



Immunohistochemistry analysis of paraffin-embedded Rat testis using FIP1L1 antibody (STJ29218) at dilution of 1:100 (20x lens). Perform microwave antigen retrieval with 10 mM PBS buffer pH 7.2 before commencing with immunohistochemistry staining protocol.



Western blot analysis of various lysates, using FIP1L1 Rabbit polyclonal antibody (STJ29218) at 1:1000 dilution. Secondary antibody: HRP Goat Anti-Rabbit IgG (H+L) (STJS000856) at 1:10000 dilution. Lysates/proteins: 25µg per lane. Blocking buffer: 3% nonfat dry milk in TBST. Detection: ECL Basic Kit. Exposure time: 90s.