

Anti-MTFP1 antibody (1-166) (STJ29190)

GENERAL INFORMATION

Product Type	Primary antibodies
Applications	WB/ELISA
Host / Source	Rabbit
Reactivity	Human/Mouse/Rat

PRODUCT PROPERTIES

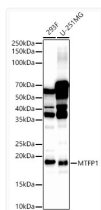
Clonality	Polyclonal
Concentration	Lot specific
Conjugation	Unconjugated
Purification	Affinity purification
Dilution Range	WB:1:500-1:1000 ELISA:Recommended starting concentration is 1 µg/mL. Please optimize the concentration based on your specific assay requirements.
Formulation	PBS with 0.02% Sodium Azide, 50% Glycerol, pH 7.3.
Isotype	IgG
Molecular Weight	Protein Mw: 18kDa Observed Mw: 18kDa
Storage Instruction	Store at -20°C for up to 1 year from the date of receipt, and avoid repeat freeze-thaw cycles.

TARGET INFORMATION

Gene ID	51537
Gene Symbol	MTFP1
UniProt ID	MTFP1_HUMAN
Immunogen Region	1-166
Immunogen Sequence	MSEPQPRGAERDLYRDTWVR YLGYANEVGEAFRSLVPAAV VWLSYGVASSYVLADAIDKG KKAGEVPSPEAGRSARVTVA VVDTFVWQALASVAIPGFTI NRVCAASLYVLGTATRWPLA VRKWTTTALGLLTPIIIHP IDRSVDFLLDSSLRKLKLYPTV GKPSSS
Specificity	Recombinant fusion protein containing a sequence corresponding to amino acids 1-166 of human MTFP1 (NP_057582.2).

ADDITIONAL INFORMATION

Note STRICTLY FOR FURTHER SCIENTIFIC RESEARCH USE ONLY (RUO). MUST NOT TO BE USED IN DIAGNOSTIC OR THERAPEUTIC APPLICATIONS.



Western blot analysis of various lysates, using MTFP1 Rabbit polyclonal antibody (STJ29190) at 1:1000 dilution. Secondary antibody: HRP Goat Anti-Rabbit IgG (H+L) (STJS000856) at 1:10000 dilution. Lysates/proteins: 25 µg per lane. Blocking buffer: 3% nonfat dry milk in TBST. Detection: ECL Basic Kit. Exposure time: 60s.