

Anti-NAA20 antibody (49-178) (STJ29185)

GENERAL INFORMATION

Product Type	Primary antibodies
Applications	WB/IHC-P/IP/ELISA
Host / Source	Rabbit
Reactivity	Human/Mouse/Rat

PRODUCT PROPERTIES

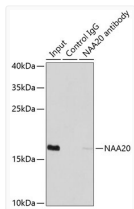
Clonality	Polyclonal
Concentration	Lot specific
Conjugation	Unconjugated
Purification	Affinity purification
Dilution Range	WB:1:500-1:2000 IHC-P:1:50-1:200 IP:0.5 Mu g-4 Mu g antibody for 200 Mu g-400 Mu g extracts of whole cells ELISA:Recommended starting concentration is 1 Mu g/mL. Please optimize the concentration based on your specific assay requirements.
Formulation	PBS with 0.02% Sodium Azide, 50% Glycerol, pH7.3.
Isotype	IgG
Molecular Weight	Protein Mw: 20kDa Observed Mw: 20kDa
Storage Instruction	Store at -20°C for up to 1 year from the date of receipt, and avoid repeat freeze-thaw cycles.

TARGET INFORMATION

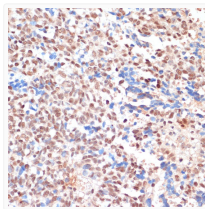
Gene ID	51126
Gene Symbol	NAA20
UniProt ID	NAA20_HUMAN
Immunogen Region	49-178
Immunogen Sequence	PGGELMGYIMGKAEGSVARE EWHGHVLTALVAPEFRRLGL AAKLMELLEIEISERKGGFFV DLFVRVSNQVAVNMYKQLGY SVYRTVIEYYASNGEPDED AYDMRKALSRDTEKKSIIPL PHPVRPEDIE
Specificity	Recombinant fusion protein containing a sequence corresponding to amino acids 49-178 of human NAA20 (NP_057184.1).

ADDITIONAL INFORMATION

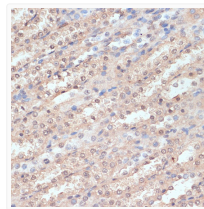
Note **STRICTLY FOR FURTHER SCIENTIFIC RESEARCH USE ONLY (RUO). MUST NOT TO BE USED IN DIAGNOSTIC OR THERAPEUTIC APPLICATIONS.**



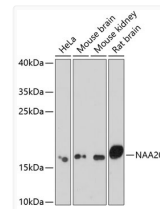
Immunoprecipitation analysis of 200 Mu g extracts of MCF7 cells using 1 Mu g NAA20 antibody (STJ29185). Western blot was performed from the immunoprecipitate using NAA20 antibody (STJ29185) at a dilution of 1:1000.



Immunohistochemistry analysis of NAA20 in paraffin-embedded human oophoroma using NAA20 Rabbit polyclonal antibody (STJ29185) at dilution of 1:100 (40x lens). Perform microwave antigen retrieval with 10 mM PBS buffer pH 7. 2 before commencing with immunohistochemistry staining protocol.



Immunohistochemistry analysis of NAA20 in paraffin-embedded rat kidney using NAA20 Rabbit polyclonal antibody (STJ29185) at dilution of 1:100 (40x lens). Perform microwave antigen retrieval with 10 mM PBS buffer pH 7. 2 before commencing with immunohistochemistry staining protocol.



Western blot analysis of various lysates using NAA20 Rabbit polyclonal antibody (STJ29185) at 1:1000 dilution. _Secondary antibody: HRP Goat Anti-Rabbit IgG (H+L) (STJS000856) at 1:10000 dilution. _Lysates/proteins: 25 Mu g per lane. _Blocking buffer: 3% nonfat dry milk in TBST. _Detection: ECL Enhanced Kit. _Exposure time: 90s.