

Anti-CLIC4 antibody (1-253) (STJ29168)

GENERAL INFORMATION

Product Type	Primary antibodies
Applications	WB/IHC-P/IF/ICC/ELISA
Host / Source	Rabbit
Reactivity	Human/Mouse/Rat

PRODUCT PROPERTIES

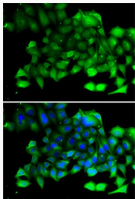
Clonality	Polyclonal
Concentration	Lot specific
Conjugation	Unconjugated
Purification	Affinity purification
Dilution Range	WB:1:100-1:500 IHC-P:1:50-1:200 IF/ICC:1:50-1:100 ELISA:Recommended starting concentration is 1 Mu g/mL. Please optimize the concentration based on your specific assay requirements.
Formulation	PBS with 0.02% Sodium Azide, 50% Glycerol, pH 7.3.
Isotype	IgG
Molecular Weight	Protein Mw: 29kDa Observed Mw: 28kDa
Storage Instruction	Store at -20°C for up to 1 year from the date of receipt, and avoid repeat freeze-thaw cycles.

TARGET INFORMATION

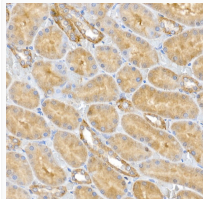
Gene ID	25932
Gene Symbol	CLIC4
UniProt ID	CLIC4_HUMAN
Immunogen Region	1-253
Immunogen Sequence	MALSMPLNGLKEEDKEPLIE LFKAGSDGESIGNCPFSQR LFMILWLKGVVFSVTTVDLK RKPADLQNLAPGTHPPFITF NSEVKTDVNKIEEFLEEVLCP PKYLKLSPKHPESNTAGMD IFAKFSAYIKNSRPEANEAL ERGLLKTQLKLEDEYLNPLP DEIDENSMEIKFSTRKFLD GNEMTLADCNLLPKLHIVKV VAKKYRNFDPKEMTGWRY LTNAYSRRDEFTNTCPDSEK
Specificity	Recombinant fusion protein containing a sequence corresponding to amino acids 1-253 of human CLIC4 (NP_039234.1).

ADDITIONAL INFORMATION

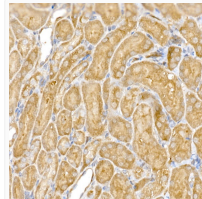
Note STRICTLY FOR FURTHER SCIENTIFIC RESEARCH USE ONLY (RUO). MUST NOT TO BE USED IN DIAGNOSTIC OR THERAPEUTIC APPLICATIONS.



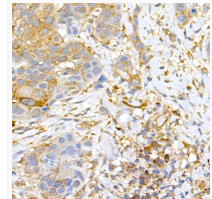
Immunofluorescence analysis of A-549 cells using CLIC4 antibody (STJ29168). Blue: DAPI for nuclear staining.



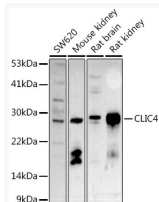
Immunohistochemistry analysis of paraffin-embedded rat kidney using CLIC4 Rabbit polyclonal antibody (STJ29168) at dilution of 1:50 (40x lens). Perform high pressure antigen retrieval with 10 mM citrate buffer pH 6.0 before commencing with immunohistochemistry staining protocol.



Immunohistochemistry analysis of paraffin-embedded mouse kidney using CLIC4 Rabbit polyclonal antibody (STJ29168) at dilution of 1:50 (40x lens). Perform high pressure antigen retrieval with 10 mM citrate buffer pH 6.0 before commencing with immunohistochemistry staining protocol.



Immunohistochemistry analysis of paraffin-embedded human esophageal cancer using CLIC4 Rabbit polyclonal antibody (STJ29168) at dilution of 1:50 (40x lens). Perform high pressure antigen retrieval with 10 mM citrate buffer pH 6.0 before commencing with immunohistochemistry staining protocol.



Western blot analysis of extracts of various cell lines, using CLIC4 antibody (STJ29168) at 1:500 dilution. Secondary antibody: HRP Goat Anti-Rabbit IgG (H+L) (STJS000856) at 1:10000 dilution. Lysates/proteins: 25 Mu g per lane. Blocking buffer: 3% nonfat dry milk in TBST. Detection: ECL Basic Kit. Exposure time: 180s.