

Anti-FKBP8 antibody (60-270) (STJ29165)

GENERAL INFORMATION

Product Type	Primary antibodies
Applications	WB/IF/ICC/IP/ELISA
Host / Source	Rabbit
Reactivity	Human/Mouse/Rat

PRODUCT PROPERTIES

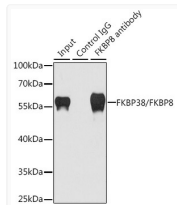
Clonality	Polyclonal
Concentration	Lot specific
Conjugation	Unconjugated
Purification	Affinity purification
Dilution Range	WB:1:500-1:2000 IF/CC:1:50-1:100 IP:0.5 Mu g-4 Mu g antibody for 200 Mu g-400 Mu g extracts of whole cells ELISA:Recommended starting concentration is 1 Mu g/mL. Please optimize the concentration based on your specific assay requirements
Formulation	PBS with 0.02% Sodium Azide, 50% Glycerol, pH 7.3.
Isotype	IgG
Molecular Weight	Protein Mw: 45kDa Observed Mw: 55kDa
Storage Instruction	Store at -20°C for up to 1 year from the date of receipt, and avoid repeat freeze-thaw cycles.

TARGET INFORMATION

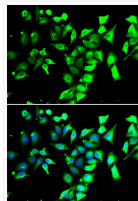
Gene ID	23770
Gene Symbol	FKBP8
UniProt ID	FKBP8_HUMAN
Immunogen Region	60-270
Immunogen Sequence	QPPAEEAEQPGALAREFLAA MEPEPAPAPAPEEWLDILGN GLLRKKTLVPGPPGSSRPVK GQVVTVHLQTSLENGTRVQE EPELVFTLGDCDVIQALDLS VPLMDVGETAMVTADSKYCY GPQGSRSPIPPHAALCLEV TLKTAVDGDPDLEMLTGQERV ALANRKRCEGNAHYQRADFV LAANSYDLAIKAITSSAKVD MTFEEEEQLLQ
Specificity	Recombinant fusion protein containing a sequence corresponding to amino acids 60-270 of human FKBP38/FKBP38/FKBP8 (NP_036313.3).

ADDITIONAL INFORMATION

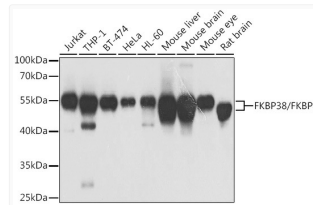
Note **STRICTLY FOR FURTHER SCIENTIFIC RESEARCH USE ONLY (RUO). MUST NOT TO BE USED IN DIAGNOSTIC OR THERAPEUTIC APPLICATIONS.**



Immunoprecipitation analysis of 200 Mu g extracts of HeLa cells using 1 Mu g FKBP38/FKBP38/FKBP8 antibody (STJ29165). Western blot was performed from the immunoprecipitate using FKBP38/FKBP38/FKBP8 antibody (STJ29165) at a dilution of 1:1000.



Immunofluorescence analysis of A549 cells using FKBP38/FKBP8 Rabbit polyclonal antibody (STJ29165). Secondary antibody: Cy3 Goat Anti-Rabbit IgG (H+L) at 1:500 dilution. Blue: DAPI for nuclear staining.



Western blot analysis of various lysates using FKBP38/FKBP8 Rabbit polyclonal antibody (STJ29165) at 1:1000 dilution. Secondary antibody: HRP Goat Anti-Rabbit IgG (H+L) (STJS000856) at 1:10000 dilution. Lysates/proteins: 25 Mu g per lane. Blocking buffer: 3% nonfat dry milk in TBST. Detection: ECL Basic Kit. Exposure time: 5s.