

Anti-OGFR antibody (1-676) (STJ29154)

GENERAL INFORMATION

Product Type	Primary antibodies
Applications	WB/IHC-P/IF/ICC/ELISA
Host / Source	Rabbit
Reactivity	Human/Mouse/Rat

PRODUCT PROPERTIES

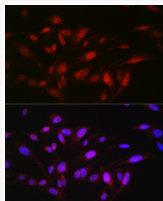
Clonality	Polyclonal
Concentration	Lot specific
Conjugation	Unconjugated
Purification	Affinity purification
Dilution Range	WB:1:500-1:1000 IHC-P:1:50-1:200 IF/ICC:1:50-1:200 ELISA:Recommended starting concentration is 1 μ g/mL. Please optimize the concentration based on your specific assay requirements.
Formulation	PBS with 0.05% Proclin300, 50% Glycerol, pH7.3.
Isotype	IgG
Molecular Weight	Protein Mw: 73kDa Observed Mw: 80kDa
Storage Instruction	Store at -20°C for up to 1 year from the date of receipt, and avoid repeat freeze-thaw cycles.

TARGET INFORMATION

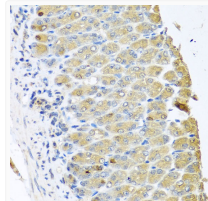
Gene ID	11054
Gene Symbol	OGFR
UniProt ID	OGFR_HUMAN
Immunogen Region	1-676
Immunogen Sequence	MDDPDCDSTWEEDEEDAEDA EDEDCEGAEAGARDADAGD EDEESEEPRAARPSSFQSRM TGSRNWRATRDMCRYRHNYPLVERDCNGDTPNLSFYRNE IRFLPNGCFIEDILQNWTDN YDLEDNHSYIQWLFPLREP GVNWHAKPLTLREVEVFKSS QEIQERLVRAYELMLGFYGI RLEDRTGTVGRAQNYQKRF QNLNWRSHNLRITRILKSL GELGLEHFQAPLVRFFLEE
Specificity	Recombinant fusion protein containing a sequence corresponding to amino acids 1-280 of human OGFR (NP_031372.2).

ADDITIONAL INFORMATION

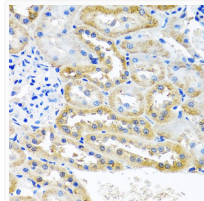
Note STRICTLY FOR FURTHER SCIENTIFIC RESEARCH USE ONLY (RUO). MUST NOT TO BE USED IN DIAGNOSTIC OR THERAPEUTIC APPLICATIONS.



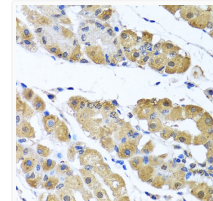
Immunofluorescence analysis of U2OS cells using OGFR Rabbit polyclonal antibody (STJ29154) at dilution of 1:50 (40x lens). Blue: DAPI for nuclear staining.



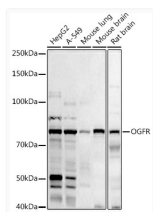
Immunohistochemistry analysis of paraffin-embedded mouse stomach using OGFR antibody (STJ29154) at dilution of 1:100 (40x lens). Perform microwave antigen retrieval with 10 mM PBS buffer pH 7.2 before commencing with immunohistochemistry staining protocol.



Immunohistochemistry analysis of paraffin-embedded rat kidney using OGFR antibody (STJ29154) at dilution of 1:100 (40x lens). Perform microwave antigen retrieval with 10 mM PBS buffer pH 7.2 before commencing with immunohistochemistry staining protocol.



Immunohistochemistry analysis of paraffin-embedded human stomach using OGFR antibody (STJ29154) at dilution of 1:100 (40x lens). Perform microwave antigen retrieval with 10 mM PBS buffer pH 7.2 before commencing with immunohistochemistry staining protocol.



Western blot analysis of extracts of various cell lines, using (STJ29154) at 1:1000 dilution. Secondary antibody: HRP Goat Anti-Rabbit IgG (H+L) (STJS000856) at 1:10000 dilution. Lysates/proteins: 25 μ g per lane. Blocking buffer: 3% nonfat dry milk in TBST. Detection: ECL Basic Kit. Exposure time: 180s.