

Anti-LILRB4 antibody (22-259) (STJ29153)

GENERAL INFORMATION

Product Type	Primary antibodies
Applications	WB/IHC-P/IF/ICC/ELISA
Host / Source	Rabbit
Reactivity	Human/Mouse/Rat

PRODUCT PROPERTIES

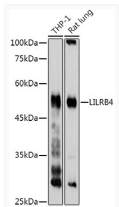
Clonality	Polyclonal
Concentration	Lot specific
Conjugation	Unconjugated
Purification	Affinity purification
Dilution Range	WB:1:500-1:1000 IHC-P:1:50-1:200 IF/CC:1:50-1:200 ELISA:Recommended starting concentration is 1 µg/mL. Please optimize the concentration based on your specific assay requirements.
Formulation	PBS with 0.09% Sodium Azide, 50% Glycerol, pH7.3.
Isotype	IgG
Molecular Weight	Protein Mw: 49kDa Observed Mw: 49kDa
Storage Instruction	Store at -20°C for up to 1 year from the date of receipt, and avoid repeat freeze-thaw cycles.

TARGET INFORMATION

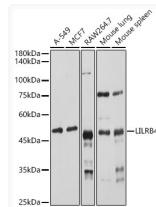
Gene ID	11006
Gene Symbol	LILRB4
UniProt ID	LILRB4_HUMAN
Immunogen Region	22-259
Immunogen Sequence	QAGPLPKPTLWAEFGSVISW GNSVTIWCQGTLEAREYRLD KEESPAPWDRQNPLEPKNKA RFSIPSMTEDYAGRYRCYYR SPVGWSQPSDPLELVMGTGAY SKPTLSALPSPPLVTSQKSVT LLCQSRSPMDTFLLIKERAA HPLLHLRSEHGAAQQHQAEPF MSPVTSVHGTTYRCFSSHG SHYLLSHSPDPLELIVSGSL EGPRPSPTRSVSTAAGPEDQ PLMPTGSPVPHSGLRRHWE
Specificity	Recombinant fusion protein containing a sequence corresponding to amino acids 22-259 of human LILRB4 (NP_001265355.2).

ADDITIONAL INFORMATION

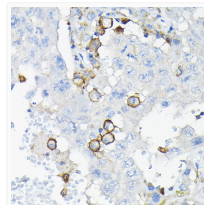
Note **STRICTLY FOR FURTHER SCIENTIFIC RESEARCH USE ONLY (RUO). MUST NOT TO BE USED IN DIAGNOSTIC OR THERAPEUTIC APPLICATIONS.**



Western blot analysis of extracts of various cell lines, using LILRB4 antibody (STJ29153) at 1:1000 dilution. Secondary antibody: HRP Goat Anti-rabbit IgG (H+L) (STJS000856) at 1:10000 dilution. Lysates/proteins: 25 µg per lane. Blocking buffer: 3% non-fat dry milk in TBST. Detection: ECL Basic Kit. Exposure time: 90s.



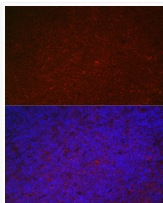
Western blot analysis of extracts of various cell lines, using LILRB4 antibody (STJ29153) at 1:1000 dilution. Secondary antibody: HRP Goat Anti-rabbit IgG (H+L) (STJS000856) at 1:10000 dilution. Lysates/proteins: 25 µg per lane. Blocking buffer: 3% non-fat dry milk in TBST. Detection: ECL Basic Kit. Exposure time: 10s.



Immunohistochemistry analysis of paraffin-embedded human liver cancer using LILRB4 rabbit polyclonal antibody (STJ29153) at dilution of 1:100 (40x lens). Perform high pressure antigen retrieval with 10 mM citrate buffer pH 6.0 before commencing with immunohistochemistry staining protocol.



Immunohistochemistry analysis of paraffin-embedded human colon carcinoma using LILRB4 rabbit polyclonal antibody (STJ29153) at dilution of 1:100 (40x lens). Perform high pressure antigen retrieval with 10 mM citrate buffer pH 6.0 before commencing with immunohistochemistry staining protocol.



Immunofluorescence analysis of mouse spleen using LILRB4 rabbit polyclonal antibody (STJ29153) at dilution of 1:100 (40x lens). Blue: DAPI for nuclear staining.