

Anti-SUB1 antibody (1-127) (STJ29150)

GENERAL INFORMATION

Product Type	Primary antibodies
Applications	WB/IF/ICC/IP/ELISA
Host / Source	Rabbit
Reactivity	Human/Mouse

PRODUCT PROPERTIES

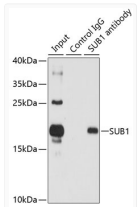
Clonality	Polyclonal
Concentration	Lot specific
Conjugation	Unconjugated
Purification	Affinity purification
Dilution Range	WB:1:500-1:2000 IF/CC:1:50-1:100 IP:0.5 Mu g-4 Mu g antibody for 200 Mu g-400 Mu g extracts of whole cells ELISA:Recommended starting concentration is 1 Mu g/mL. Please optimize the concentration based on your specific assay requirements
Formulation	PBS with 0.02% Sodium Azide, 50% Glycerol, pH 7.3.
Isotype	IgG
Molecular Weight	Protein Mw: 14kDa Observed Mw: 17kDa
Storage Instruction	Store at -20°C for up to 1 year from the date of receipt, and avoid repeat freeze-thaw cycles.

TARGET INFORMATION

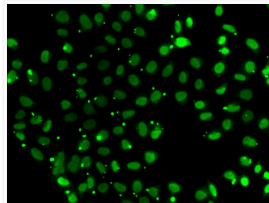
Gene ID	10923
Gene Symbol	SUB1
UniProt ID	TCP4_HUMAN
Immunogen Region	1-127
Immunogen Sequence	MPKSKELVSSSSSGSDSE VDKKLRKKQVAPEKPVKKQ KTGETSRALSSSKQSSSRD DNMFQIGKMRVSVRDFKGG VLIDIREYWM DPEGEMKPGR KGISLNPEQWSQLKEQISDI DDAVRKL
Specificity	Recombinant fusion protein containing a sequence corresponding to amino acids 1-127 of human SUB1 (NP_006704.3).

ADDITIONAL INFORMATION

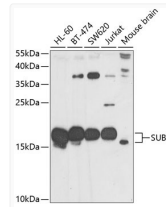
Note **STRICTLY FOR FURTHER SCIENTIFIC RESEARCH USE ONLY (RUO). MUST NOT TO BE USED IN DIAGNOSTIC OR THERAPEUTIC APPLICATIONS.**



Immunoprecipitation analysis of 150 Mu g extracts of HL60 cells using 3 Mu g SUB1 antibody (STJ29150). Western blot was performed from the immunoprecipitate using SUB1 antibody (STJ29150) at a dilution of 1:500.



Immunofluorescence analysis of A549 cells using SUB1 Rabbit polyclonal antibody (STJ29150). Secondary antibody: Cy3 Goat Anti-Rabbit IgG (H+L) at 1:500 dilution.



Western blot analysis of various lysates using SUB1 Rabbit polyclonal antibody (STJ29150) at 1:1000 dilution. Secondary antibody: HRP Goat Anti-Rabbit IgG (H+L) (STJS000856) at 1:10000 dilution. Lysates/proteins: 25 Mu g per lane. Blocking buffer: 3% nonfat dry milk in TBST. Detection: ECL Basic Kit. Exposure time: 30s.