

Anti-DNAJA2 antibody (233-412) (STJ29139)

GENERAL INFORMATION

Product Type	Primary antibodies
Applications	WB/IHC-P/IF/ICC/ELISA
Host / Source	Rabbit
Reactivity	Human/Mouse/Rat

PRODUCT PROPERTIES

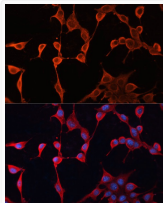
Clonality	Polyclonal
Concentration	Lot specific
Conjugation	Unconjugated
Purification	Affinity purification
Dilution Range	WB:1:500-1:2000 IHC-P:1:50-1:200 IF/CC:1:50-1:200 ELISA:Recommended starting concentration is 1 μ g/mL. Please optimize the concentration based on your specific assay requirements.
Formulation	PBS with 0.02% Sodium Azide, 50% Glycerol, pH 7.3.
Isotype	IgG
Molecular Weight	Protein Mw: 46kDa Observed Mw: 46kDa
Storage Instruction	Store at -20°C for up to 1 year from the date of receipt, and avoid repeat freeze-thaw cycles.

TARGET INFORMATION

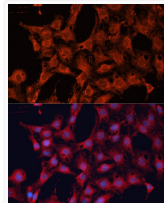
Gene ID	10294
Gene Symbol	DNAJA2
UniProt ID	DNJA2_HUMAN
Immunogen Region	233-412
Immunogen Sequence	FTGEADQAPGVPEPGDIVLLL QEKEHEVFQRDGNLHMTYK IGLVEALCGFQFTFKHLDGR QIVVKYPPGKVIIEPGCVRVV RGEEMPQYRNPFKEGDLIYK FDVQFPENNWINPKLSELE DLLPSRPEVPIIIGETEEVE LQEFDSTRGSGGGQRREAYN DSSDEESSHHGPGVQCAHQ
Specificity	Recombinant fusion protein containing a sequence corresponding to amino acids 233-412 of human DNAJA2 (NP_005871.1).

ADDITIONAL INFORMATION

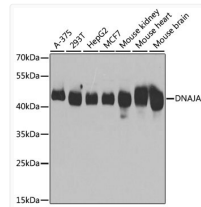
Note **STRICTLY FOR FURTHER SCIENTIFIC RESEARCH USE ONLY (RUO). MUST NOT TO BE USED IN DIAGNOSTIC OR THERAPEUTIC APPLICATIONS.**



Immunofluorescence analysis of NIH/3T3 cells using DNAJA2 antibody (STJ29139) at dilution of 1:100. Blue: DAPI for nuclear staining.



Immunofluorescence analysis of C6 cells using DNAJA2 antibody (STJ29139) at dilution of 1:100. Blue: DAPI for nuclear staining.



Western blot analysis of extracts of various cell lines, using DNAJA2 antibody (STJ29139) at 1:3000 dilution. Secondary antibody: HRP Goat Anti-Rabbit IgG (H+L) (STJS000856) at 1:10000 dilution. Lysates/proteins: 25 μ g per lane. Blocking buffer: 3% nonfat dry milk in TBST. Detection: ECL Basic Kit. Exposure time: 5s.