

Anti-DNAJB6 antibody (177-326) (STJ29132)

GENERAL INFORMATION

Product Type	Primary antibodies
Applications	WB/IHC-P/IF/ICC/ELISA
Host / Source	Rabbit
Reactivity	Human/Mouse/Rat

PRODUCT PROPERTIES

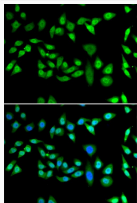
Clonality	Polyclonal
Concentration	Lot specific
Conjugation	Unconjugated
Purification	Affinity purification
Dilution Range	WB:1:500-1:2000 IHC-P:1:50-1:200 IF/CC:1:50-1:100 ELISA:Recommended starting concentration is 1 Mu g/mL. Please optimize the concentration based on your specific assay requirements.
Formulation	PBS with 0.02% Sodium Azide, 50% Glycerol, pH 7.3.
Isotype	IgG
Molecular Weight	Protein Mw: 36kDa Observed Mw: 38kDa
Storage Instruction	Store at -20°C for up to 1 year from the date of receipt, and avoid repeat freeze-thaw cycles.

TARGET INFORMATION

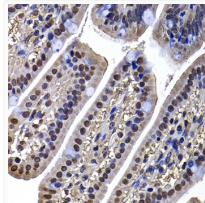
Gene ID	10049
Gene Symbol	DNAJB6
UniProt ID	DNJB6_HUMAN
Immunogen Region	177-326
Immunogen Sequence	STSFGGSGMGNFKSISTSTK MVNGRKITTKRIVENGQERV EVEDDGLKSLTINGVADDD ALAEERMRRGQNALPAQPAG LRPPKPPRPASLLRHAPHCL SEEEGEQDRPRAPGPWDPLA SAAGLKEGGKRRKKQKQREES KKKKSTKGNH
Specificity	Recombinant fusion protein containing a sequence corresponding to amino acids 177-326 of human DNAJB6 (NP_490647.1).

ADDITIONAL INFORMATION

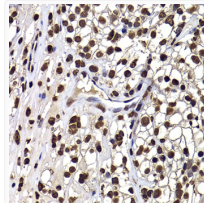
Note **STRICTLY FOR FURTHER SCIENTIFIC RESEARCH USE ONLY (RUO). MUST NOT TO BE USED IN DIAGNOSTIC OR THERAPEUTIC APPLICATIONS.**



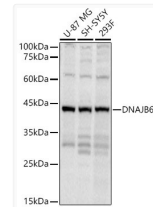
Immunofluorescence analysis of U2OS cells using DNAJB6 Rabbit polyclonal antibody (STJ29132). Secondary antibody: Cy3 Goat Anti-Rabbit IgG (H+L) at 1:500 dilution. Blue: DAPI for nuclear staining.



Immunohistochemistry analysis of DNAJB6 in paraffin-embedded mouse ileum using DNAJB6 Rabbit polyclonal antibody (STJ29132) at dilution of 1:100 (40x lens). Perform microwave antigen retrieval with 10 mM PBS buffer pH 7.2 before commencing with immunohistochemistry staining protocol.



Immunohistochemistry analysis of DNAJB6 in paraffin-embedded human kidney cancer using DNAJB6 Rabbit polyclonal antibody (STJ29132) at dilution of 1:100 (40x lens). Perform microwave antigen retrieval with 10 mM PBS buffer pH 7.2 before commencing with immunohistochemistry staining protocol.



Western blot analysis of various lysates using DNAJB6 Rabbit polyclonal antibody (STJ29132) at 1:1000 dilution. Secondary antibody: HRP Goat Anti-Rabbit IgG (H+L) (STJS000856) at 1:10000 dilution. Lysates/ proteins: 25 Mu g per lane. Blocking buffer: 3 % nonfat dry milk in TBST. Detection: ECL Basic Kit. Exposure time: 10s.