

Anti-TOX antibody (30-526) (STJ29130)

GENERAL INFORMATION

Product Type	Primary antibodies
Applications	WB/IHC-P/IF/ICC/ELISA
Host / Source	Rabbit
Reactivity	Human/Mouse/Rat

PRODUCT PROPERTIES

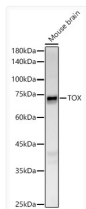
Clonality	Polyclonal
Concentration	Lot specific
Conjugation	Unconjugated
Purification	Affinity purification
Dilution Range	WB:1:500-1:2000 IHC-P:1:50-1:200 IF/ICC:1:50-1:200 ELISA:Recommended starting concentration is 1 µg/mL. Please optimize the concentration based on your specific assay requirements.
Formulation	PBS with 0.05% Proclin300, 50% Glycerol, pH 7.3.
Isotype	IgG
Molecular Weight	Protein Mw: 58kDa Observed Mw: 60-80kDa
Storage Instruction	Store at -20°C for up to 1 year from the date of receipt, and avoid repeat freeze-thaw cycles.

TARGET INFORMATION

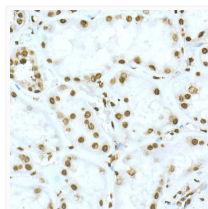
Gene ID	9760
Gene Symbol	TOX
UniProt ID	TOX_HUMAN
Immunogen Region	30-526
Immunogen Sequence	YYCNKFDGENMYMSMTEPSQ DYVPASQSYGPGSLESEDFN IPPITPPSLPDHSLVHLNEV ESGYHSLCHPMNHNGLLPFH PQNMDLPEITVSNMLGQDGT LLSNSISVMPDIRNPEGTQY SSHPQMAAMRPRGQPA
Specificity	Recombinant fusion protein containing a sequence corresponding to amino acids 30-165 of human TOX (NP_055544.1).

ADDITIONAL INFORMATION

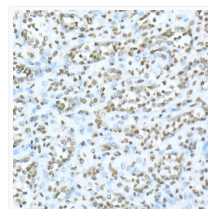
Note **STRICTLY FOR FURTHER SCIENTIFIC RESEARCH USE ONLY (RUO). MUST NOT TO BE USED IN DIAGNOSTIC OR THERAPEUTIC APPLICATIONS.**



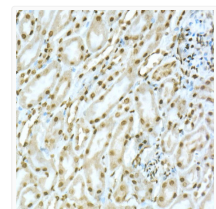
Western blot analysis of mouse brain, using TOX rabbit polyclonal antibody (STJ29130) at 1:400 dilution. Secondary antibody: HRP Goat Anti-rabbit IgG (H+L) (STJS000856) at 1:10000 dilution. Lysates/proteins: 25µg per lane. Blocking buffer: 3% non-fat dry milk in TBST. Detection: ECL Basic Kit. Exposure time: 180s.



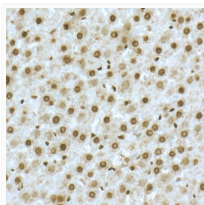
Immunohistochemistry analysis of paraffin-embedded human kidney using TOX rabbit polyclonal antibody (STJ29130) at dilution of 1:50 (40x lens). Perform high pressure antigen retrieval with 10 mM citrate buffer pH 6.0 before commencing with immunohistochemistry staining protocol.



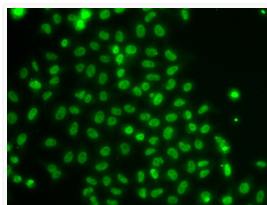
Immunohistochemistry analysis of paraffin-embedded human spleen using TOX rabbit polyclonal antibody (STJ29130) at dilution of 1:50 (40x lens). Perform high pressure antigen retrieval with 10 mM citrate buffer pH 6.0 before commencing with immunohistochemistry staining protocol.



Immunohistochemistry analysis of paraffin-embedded mouse kidney using TOX rabbit polyclonal antibody (STJ29130) at dilution of 1:50 (40x lens). Perform high pressure antigen retrieval with 10 mM citrate buffer pH 6.0 before commencing with immunohistochemistry staining protocol.



Immunohistochemistry analysis of paraffin-embedded rat liver using TOX rabbit polyclonal antibody (STJ29130) at dilution of 1:50 (40x lens). Perform high pressure antigen retrieval with 10 mM citrate buffer pH 6.0 before commencing with immunohistochemistry staining protocol.



Immunofluorescence analysis of U2OS cells using TOX antibody (STJ29130).