

Anti-H2AFY antibody (123-372) (STJ29125)

GENERAL INFORMATION

Product Type	Primary antibodies
Applications	WB/IHC-P/IF/ICC/ELISA
Host / Source	Rabbit
Reactivity	Human/Mouse/Rat

PRODUCT PROPERTIES

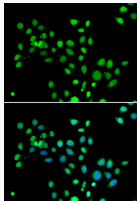
Clonality	Polyclonal
Concentration	Lot specific
Conjugation	Unconjugated
Purification	Affinity purification
Dilution Range	WB:1:500-1:2000 IHC-P:1:50-1:200 IF/ICC:1:50-1:100 ELISA:Recommended starting concentration is 1 μ g/mL. Please optimize the concentration based on your specific assay requirements.
Formulation	PBS with 0.02% Sodium Azide, 50% Glycerol, pH 7.3.
Isotype	IgG
Molecular Weight	Protein Mw: 39kDa Observed Mw: 40kDa
Storage Instruction	Store at -20°C for up to 1 year from the date of receipt, and avoid repeat freeze-thaw cycles.

TARGET INFORMATION

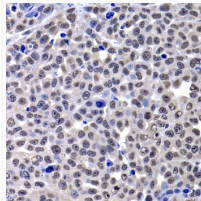
Gene ID	9555
Gene Symbol	MACROH2A1
UniProt ID	H2AY_HUMAN
Immunogen Region	123-372
Immunogen Sequence	KLEAIITPPPAKKAKSPSQK KPVSCKAGGKKGARKSKKKQ GEVSKAASADSTTEGTPADG FTVLSTKSLFLGQKLNLIHS EISNLAGFEVEAIINPTNAD IDLKDDLGNLTLEKKGKKEFV EAVLELRKKNGLPEVAGAAV SAGHGLPAKFVIHCNSPVWG ADKCEELLEKTVKNCCLALAD DKKLKSIAPPSIGSRNGFP QKTAACLILKAISSYFVSTM SSSIKTVYVFLFDSSESIGI
Specificity	Recombinant fusion protein containing a sequence corresponding to amino acids 123-372 of human macroH2A.1 (NP_613258.2).

ADDITIONAL INFORMATION

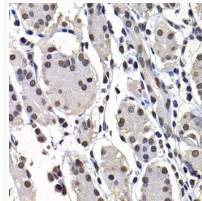
Note STRICTLY FOR FURTHER SCIENTIFIC RESEARCH USE ONLY (RUO). MUST NOT TO BE USED IN DIAGNOSTIC OR THERAPEUTIC APPLICATIONS.



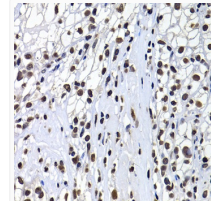
Immunofluorescence analysis of U2OS cells using [KO Validated] macroH2A. 1 Rabbit polyclonal antibody (STJ29125). Secondary antibody: Cy3 Goat Anti-Rabbit IgG (H+L) at 1:500 dilution. Blue: DAPI for nuclear staining.



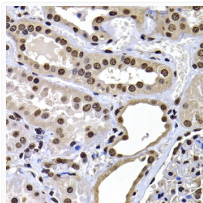
Immunohistochemistry analysis of macroH2A. 1 in paraffin-embedded mouse lung cancer using [KO Validated] macroH2A. 1 Rabbit polyclonal antibody (STJ29125) at dilution of 1:100 (40x lens). Perform microwave antigen retrieval with 10 mM PBS buffer pH 7. 2 before commencing with immunohistochemistry staining protocol.



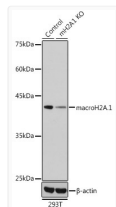
Immunohistochemistry analysis of macroH2A. 1 in paraffin-embedded human stomach using [KO Validated] macroH2A. 1 Rabbit polyclonal antibody (STJ29125) at dilution of 1:100 (40x lens). Perform microwave antigen retrieval with 10 mM PBS buffer pH 7. 2 before commencing with immunohistochemistry staining protocol.



Immunohistochemistry analysis of macroH2A. 1 in paraffin-embedded human kidney cancer using [KO Validated] macroH2A. 1 Rabbit polyclonal antibody (STJ29125) at dilution of 1:100 (40x lens). Perform microwave antigen retrieval with 10 mM PBS buffer pH 7. 2 before commencing with immunohistochemistry staining protocol.



Immunohistochemistry analysis of macroH2A. 1 in paraffin-embedded human kidney using [KO Validated] macroH2A. 1 Rabbit polyclonal antibody (STJ29125) at dilution of 1:100 (40x lens). Perform microwave antigen retrieval with 10 mM PBS buffer pH 7. 2 before commencing with immunohistochemistry staining protocol.



Western blot analysis of lysates from wild type (WT) and macroH2A. 1 knockout (KO) 293T cells, using [KO Validated] macroH2A. 1 Rabbit polyclonal antibody (STJ29125) at 1:1000 dilution. Secondary antibody: HRP Goat Anti-Rabbit IgG (H+L) (STJS000856) at 1:10000 dilution. Lysates/proteins: 25 μ g per lane. Blocking buffer: 3% nonfat dry milk in TBST. Detection: ECL Basic Kit. Exposure time: 1s.