

Anti-COPB2 antibody (657-906) (STJ29116)

GENERAL INFORMATION

Product Type	Primary antibodies
Applications	WB/IHC-P/IF/ICC/ELISA
Host / Source	Rabbit
Reactivity	Human/Mouse/Rat

PRODUCT PROPERTIES

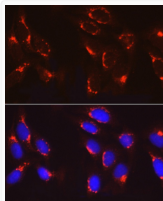
Clonality	Polyclonal
Concentration	Lot specific
Conjugation	Unconjugated
Purification	Affinity purification
Dilution Range	WB:1:500-1:1000 IHC-P:1:50-1:200 IF/CC:1:50-1:200 ELISA:Recommended starting concentration is 1 Mu g/mL. Please optimize the concentration based on your specific assay requirements.
Formulation	PBS with 0.05% Proclin300, 50% Glycerol, pH7.3.
Isotype	IgG
Molecular Weight	Protein Mw: 102kDa Observed Mw: 102kDa
Storage Instruction	Store at -20°C for up to 1 year from the date of receipt, and avoid repeat freeze-thaw cycles.

TARGET INFORMATION

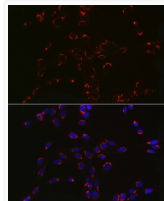
Gene ID	9276
Gene Symbol	COPB2
UniProt ID	COPB2_HUMAN
Immunogen Region	657-906
Immunogen Sequence	AYQLAVEAESEQKWKQLAEL AISKCFGLAQECLHHAQDY GGLLLLATASGNANMVKLA EGAERDGGKNNVAFMSYFLOG KVDACLELLIRTGRLPEAAF LARTYLPQSQVSRVVKLWREN LSKVNQKAAESLADPTEYEN LFPGLKEAFVVEEWVKETHA DLWPAKQYPLVTPNEERNVM EEGKDFQPSRSTAQQELDGK PASPTPVIVASHTANKEEKS LLELEVLDLNLELEDIDTT
Specificity	Recombinant fusion protein containing a sequence corresponding to amino acids 657-906 of human COPB2 (NP_004757.1).

ADDITIONAL INFORMATION

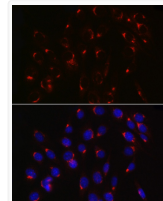
Note	STRICTLY FOR FURTHER SCIENTIFIC RESEARCH USE ONLY (RUO). MUST NOT TO BE USED IN DIAGNOSTIC OR THERAPEUTIC APPLICATIONS.
------	---



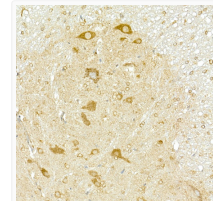
Immunofluorescence analysis of U2OS cells using COPB2 Rabbit polyclonal antibody (STJ29116) at dilution of 1:100 (40x lens). Secondary antibody: Cy3 Goat Anti-Rabbit IgG (H+L) at 1:500 dilution. Blue: DAPI for nuclear staining.



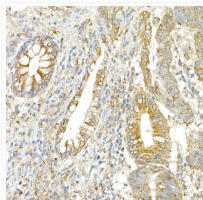
Immunofluorescence analysis of PC-12 cells using COPB2 Rabbit polyclonal antibody (STJ29116) at dilution of 1:100 (40x lens). Secondary antibody: Cy3 Goat Anti-Rabbit IgG (H+L) at 1:500 dilution. Blue: DAPI for nuclear staining.



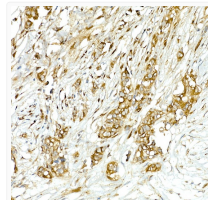
Immunofluorescence analysis of NIH/3T3 cells using COPB2 Rabbit polyclonal antibody (STJ29116) at dilution of 1:100 (40x lens). Secondary antibody: Cy3 Goat Anti-Rabbit IgG (H+L) at 1:500 dilution. Blue: DAPI for nuclear staining.



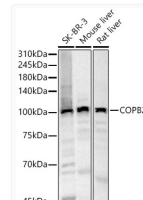
Immunohistochemistry analysis of COPB2 in paraffin-embedded mouse spinal cord using COPB2 Rabbit polyclonal antibody (STJ29116) at dilution of 1:50 (40x lens). Perform high pressure antigen retrieval with 10 mM citrate buffer pH 6. 0 before commencing with immunohistochemistry staining protocol.



Immunohistochemistry analysis of COPB2 in paraffin-embedded human colon carcinoma using COPB2 Rabbit polyclonal antibody (STJ29116) at dilution of 1:50 (40x lens). Perform high pressure antigen retrieval with 10 mM citrate buffer pH 6. 0 before commencing with immunohistochemistry staining protocol.



Immunohistochemistry analysis of COPB2 in paraffin-embedded human breast cancer using COPB2 Rabbit polyclonal antibody (STJ29116) at dilution of 1:50 (40x lens). Perform high pressure antigen retrieval with 10 mM citrate buffer pH 6. 0 before commencing with immunohistochemistry staining protocol.



Western blot analysis of various lysates, using COPB2 Rabbit polyclonal antibody (STJ29116) at 1:500 dilution. Secondary antibody: HRP Goat Anti-Rabbit IgG (H+L) (STJS000856) at 1:10000 dilution. Lysates/proteins: 25 Mu g per lane. Blocking buffer: 3% nonfat dry milk in TBST. Detection: ECL Basic Kit. Exposure time: 30s.