

Anti-AP3B1 antibody (895-1094) (STJ29099)

GENERAL INFORMATION

Product Type	Primary antibodies
Applications	WB/IHC-P/ELISA
Host / Source	Rabbit
Reactivity	Human/Mouse/Rat

PRODUCT PROPERTIES

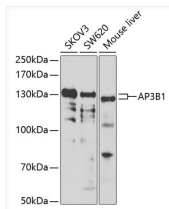
Clonality	Polyclonal
Concentration	Lot specific
Conjugation	Unconjugated
Purification	Affinity purification
Dilution Range	WB:1:500-1:2000 IHC-P:1:50-1:200 ELISA:Recommended starting concentration is 1 µg/mL. Please optimize the concentration based on your specific assay requirements.
Formulation	PBS with 0.02% Sodium Azide, 50% Glycerol, pH 7.3.
Isotype	IgG
Molecular Weight	Protein Mw: 121kDa Observed Mw: 132kDa
Storage Instruction	Store at -20°C for up to 1 year from the date of receipt, and avoid repeat freeze-thaw cycles.

TARGET INFORMATION

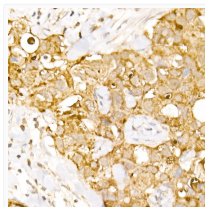
Gene ID	8546
Gene Symbol	AP3B1
UniProt ID	AP3B1_HUMAN
Immunogen Region	895-1094
Immunogen Sequence	FGDKMVSIIQITLNNITDRKI ENIHIGEKKLPIGMKMHVFN PIDSLEPEGSITVSMGIDFC DSTQTASFQLCTKDDCFNVN IQPPVGELELLPVAMSEKDFK KEQGVLTGMNETSAVIAAP QNFTPSVIFQKVVNVANVGA VPSGQDNIHRFAAKTVHSGS LMLVTVELKEGSTAQLIINT EKTVIGSVLLRELKPVLSQG
Specificity	Recombinant fusion protein containing a sequence corresponding to amino acids 895-1094 of human AP3B1 (NP_003655.3).

ADDITIONAL INFORMATION

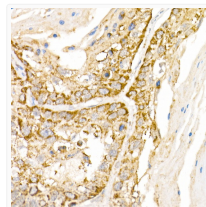
Note **STRICTLY FOR FURTHER SCIENTIFIC RESEARCH USE ONLY (RUO). MUST NOT TO BE USED IN DIAGNOSTIC OR THERAPEUTIC APPLICATIONS.**



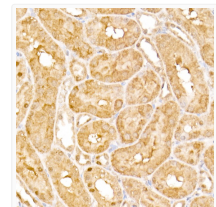
Western blot analysis of extracts of various cell lines, using AP3B1 antibody (STJ29099) at 1:1000 dilution. Secondary antibody: HRP Goat Anti-rabbit IgG (H+L) (STJS000856) at 1:10000 dilution. Lysates/proteins: 25 µg per lane. Blocking buffer: 3% non-fat dry milk in TBST. Detection: ECL Basic Kit. Exposure time: 90s.



Immunohistochemistry analysis of paraffin-embedded human breast cancer using AP3B1 rabbit polyclonal antibody (STJ29099) at dilution of 1:100 (40x lens). Perform high pressure antigen retrieval with 10 mM citrate buffer pH 6.0 before commencing with immunohistochemistry staining protocol.



Immunohistochemistry analysis of paraffin-embedded human lung cancer using AP3B1 rabbit polyclonal antibody (STJ29099) at dilution of 1:100 (40x lens). Perform high pressure antigen retrieval with 10 mM citrate buffer pH 6.0 before commencing with immunohistochemistry staining protocol.



Immunohistochemistry analysis of paraffin-embedded rat kidney using AP3B1 rabbit polyclonal antibody (STJ29099) at dilution of 1:100 (40x lens). Perform high pressure antigen retrieval with 10 mM citrate buffer pH 6.0 before commencing with immunohistochemistry staining protocol.