

Anti-RPLP2 antibody (1-115) (STJ29054)

GENERAL INFORMATION

Product Type	Primary antibodies
Applications	IHC-P/IF/ICC/ELISA
Host / Source	Rabbit
Reactivity	Human/Mouse/Rat

PRODUCT PROPERTIES

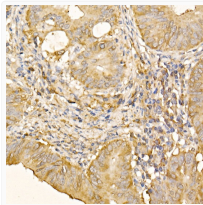
Clonality	Polyclonal
Concentration	Lot specific
Conjugation	Unconjugated
Purification	Affinity purification
Dilution Range	IHC-P:1:100-1:500 IF/CC:1:50-1:100 ELISA:Recommended starting concentration is 1 µg/mL. Please optimize the concentration based on your specific assay requirements.
Formulation	PBS with 0.02% Sodium Azide, 50% Glycerol, pH 7.3.
Isotype	IgG
Molecular Weight	Protein Mw: 12kDa Observed Mw:
Storage Instruction	Store at -20°C for up to 1 year from the date of receipt, and avoid repeat freeze-thaw cycles.

TARGET INFORMATION

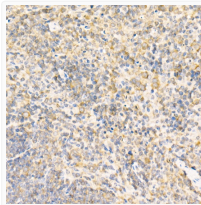
Gene ID	6181
Gene Symbol	RPLP2
UniProt ID	RLA2_HUMAN
Immunogen Region	1-115
Immunogen Sequence	MRYVASYLALLAALGGNSSPSA KDIKKILDSVIGIEADDDRLN KVISLNGKNIEDVIAQGIG KLASVPAGGAVAVSAAPGSA APAAGSAPAAAEKKDEKKE ESEESDDDMGFGLFD
Specificity	Recombinant fusion protein containing a sequence corresponding to amino acids 1-115 of human RPLP2 (NP_000995.1).

ADDITIONAL INFORMATION

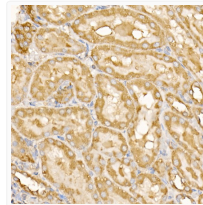
Note **STRICTLY FOR FURTHER SCIENTIFIC RESEARCH USE ONLY (RUO). MUST NOT TO BE USED IN DIAGNOSTIC OR THERAPEUTIC APPLICATIONS.**



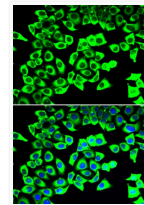
Immunohistochemistry analysis of paraffin-embedded human colon carcinoma using RPLP2 rabbit polyclonal antibody (STJ29054) at dilution of 1:500 (40x lens). Perform high pressure antigen retrieval with 10 mM citrate buffer pH 6.0 before commencing with immunohistochemistry staining protocol.



Immunohistochemistry analysis of paraffin-embedded mouse spleen using RPLP2 rabbit polyclonal antibody (STJ29054) at dilution of 1:500 (40x lens). Perform high pressure antigen retrieval with 10 mM citrate buffer pH 6.0 before commencing with immunohistochemistry staining protocol.



Immunohistochemistry analysis of paraffin-embedded rat kidney using RPLP2 rabbit polyclonal antibody (STJ29054) at dilution of 1:500 (40x lens). Perform high pressure antigen retrieval with 10 mM citrate buffer pH 6.0 before commencing with immunohistochemistry staining protocol.



Immunofluorescence analysis of U2OS cells using RPLP2 antibody (STJ29054). Blue: DAPI for nuclear staining.