

## Anti-MAP2K5 antibody (1-190) (STJ29033)

### GENERAL INFORMATION

Product Type	Primary antibodies
Applications	WB/IHC-P/IF/ICC/ELISA
Host / Source	Rabbit
Reactivity	Human/Mouse/Rat

### PRODUCT PROPERTIES

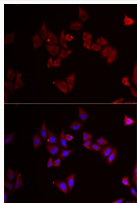
Clonality	Polyclonal
Concentration	Lot specific
Conjugation	Unconjugated
Purification	Affinity purification
Dilution Range	WB:1:500-1:2000 IHC-P:1:50-1:200 IF/ICC:1:50-1:100 ELISA:Recommended starting concentration is 1 Mu g/mL. Please optimize the concentration based on your specific assay requirements.
Formulation	PBS with 0.09% Sodium Azide, 50% Glycerol, pH 7.3.
Isotype	IgG
Molecular Weight	Protein Mw: 50kDa Observed Mw: 50kDa
Storage Instruction	Store at -20°C for up to 1 year from the date of receipt, and avoid repeat freeze-thaw cycles.

### TARGET INFORMATION

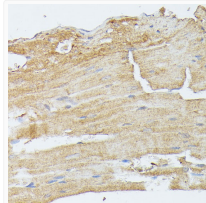
Gene ID	<a href="#">5607</a>
Gene Symbol	<a href="#">MAP2K5</a>
UniProt ID	<a href="#">MP2K5_HUMAN</a>
Immunogen Region	1-190
Immunogen Sequence	MLWLAGLGFAMENQVLVIR IKIPNSGAVDWTVHSGPQLL FRDVLVDVIGQVLP EATTTAF EYEDGDRITVRSDEEMKA MLSYYYSTVMEQQVNGQLIE PLQIFPRACKPPGERNIHGL KVNTRAGPSQHSPPAVSDSL PSNSLKKSSAELKKILANGQ MNEQDIRYRDTLGHGNGGTV YKAYHVPSGK
Specificity	Recombinant fusion protein containing a sequence corresponding to amino acids 1-190 of human MEK5 (NP_660143.1).

### ADDITIONAL INFORMATION

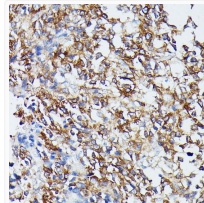
Note STRICTLY FOR FURTHER SCIENTIFIC RESEARCH USE ONLY (RUO). MUST NOT TO BE USED IN DIAGNOSTIC OR THERAPEUTIC APPLICATIONS.



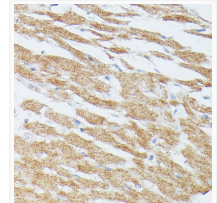
Immunofluorescence analysis of MCF7 cells using MEK5 Rabbit polyclonal antibody (STJ29033). Secondary antibody: Cy3 Goat Anti-Rabbit IgG (H+L) at 1:500 dilution. Blue: DAPI for nuclear staining.



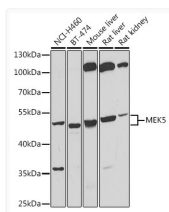
Immunohistochemistry analysis of MEK5 in paraffin-embedded mouse heart using MEK5 Rabbit polyclonal antibody (STJ29033) at dilution of 1:100 (40x lens). Perform microwave antigen retrieval with 10 mM PBS buffer pH 7.2 before commencing with immunohistochemistry staining protocol.



Immunohistochemistry analysis of MEK5 in paraffin-embedded human appendix using MEK5 Rabbit polyclonal antibody (STJ29033) at dilution of 1:100 (40x lens). Perform microwave antigen retrieval with 10 mM PBS buffer pH 7.2 before commencing with immunohistochemistry staining protocol.



Immunohistochemistry analysis of MEK5 in paraffin-embedded rat heart using MEK5 Rabbit polyclonal antibody (STJ29033) at dilution of 1:100 (40x lens). Perform microwave antigen retrieval with 10 mM PBS buffer pH 7.2 before commencing with immunohistochemistry staining protocol.



Western blot analysis of various lysates using MEK5 Rabbit polyclonal antibody (STJ29033) at 1:500 dilution. Secondary antibody: HRP Goat Anti-Rabbit IgG (H+L) (STJS000856) at 1:10000 dilution. Lysates/proteins: 25 Mu g per lane. Blocking buffer: 3% nonfat dry milk in TBST. Detection: ECL Basic Kit. Exposure time: 20s.