

Anti-HABP2 antibody (24-313) (STJ28999)

GENERAL INFORMATION

Product Type	Primary antibodies
Applications	WB/IF/ICC/ELISA
Host / Source	Rabbit
Reactivity	Human/Mouse

PRODUCT PROPERTIES

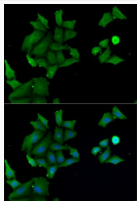
Clonality	Polyclonal
Concentration	Lot specific
Conjugation	Unconjugated
Purification	Affinity purification
Dilution Range	WB:1:500-1:2000 IF/CC:1:50-1:100 ELISA:Recommended starting concentration is 1 µg/mL. Please optimize the concentration based on your specific assay requirements.
Formulation	PBS with 0.02% Sodium Azide, 50% Glycerol, pH 7.3.
Isotype	IgG
Molecular Weight	Protein Mw: 63kDa Observed Mw: 50kDa/70kDa
Storage Instruction	Store at -20°C for up to 1 year from the date of receipt, and avoid repeat freeze-thaw cycles.

TARGET INFORMATION

Gene ID	3026
Gene Symbol	HABP2
UniProt ID	HABP2_HUMAN
Immunogen Region	24-313
Immunogen Sequence	FSLMSLLESLDPDWTPDQYD YSYEDYNQEENTSSLTTHAE NPDWYTTEDQADPCQPNPCE HGGDCLVHGSTFTCSCLAPF SGNKCQKQVQNTCKDNPCGRG QCLITQSPYYRCVCKHPYT GPSCSQVVPVCRPNPCQNGA TCSRHKRRSKFTCACPDQFK GKFCFEGSDDCYVGDGYSYR GKMNRVTNQHACLWNSHLL LQENYNMFMEDAETHGIGEH NFCRNPDADKPKWCFIKVT
Specificity	Recombinant fusion protein containing a sequence corresponding to amino acids 24-313 of human HABP2 (NP_004123.1).

ADDITIONAL INFORMATION

Note	STRICTLY FOR FURTHER SCIENTIFIC RESEARCH USE ONLY (RUO). MUST NOT TO BE USED IN DIAGNOSTIC OR THERAPEUTIC APPLICATIONS.
------	---



Immunofluorescence analysis of MCF7 cells using HABP2 Rabbit polyclonal antibody (STJ28999). Secondary antibody: Cy3 Goat Anti-Rabbit IgG (H+L) at 1:500 dilution. Blue: DAPI for nuclear staining.