

Anti-GPI antibody (1-280) (STJ28996)

GENERAL INFORMATION

Product Type	Primary antibodies
Applications	WB/IHC-P/ELISA
Host / Source	Rabbit
Reactivity	Human/Mouse/Rat

PRODUCT PROPERTIES

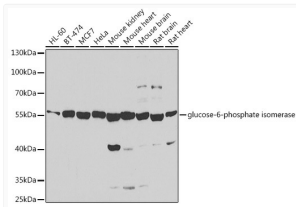
Clonality	Polyclonal
Concentration	Lot specific
Conjugation	Unconjugated
Purification	Affinity purification
Dilution Range	WB:1:500-1:2000 IHC-P:1:500-1:1000 ELISA:Recommended starting concentration is 1 Mu g/mL. Please optimize the concentration based on your specific assay requirements.
Formulation	PBS with 0.09% Sodium Azide, 50% Glycerol, pH7.3.
Isotype	IgG
Molecular Weight	Protein Mw: 63kDa Observed Mw: 58kDa
Storage Instruction	Store at -20°C for up to 1 year from the date of receipt, and avoid repeat freeze-thaw cycles.

TARGET INFORMATION

Gene ID	2821
Gene Symbol	GPI
UniProt ID	G6PI_HUMAN
Immunogen Region	1-280
Immunogen Sequence	MAALTRDPQFQKLLQWYREH RSELNLRRLFDANKDRFNHF SLTLNTNHGHILVDYSKNLV TEDVMRMLVDLAKSRGVEAA RERMFNGEKINYTEGRAVLH VALRNRSNTPILVDGKDVMP EVNKVLDMKMSFCQVRVSGD WKGYTGKTITDVINIGIGGS DLGPLMVTEALKPYSGGPR VWYVSNIDGTHIAKTLAQLN PESSLFIASKFTTTQETIT NAETAKEWFLQAAKDPSAV
Specificity	Recombinant fusion protein containing a sequence corresponding to amino acids 1-280 of human glucose-6-phosphate isomerase (NP_000166.2).

ADDITIONAL INFORMATION

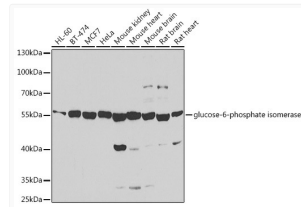
Note **STRICTLY FOR FURTHER SCIENTIFIC RESEARCH USE ONLY (RUO). MUST NOT TO BE USED IN DIAGNOSTIC OR THERAPEUTIC APPLICATIONS.**



Western blot analysis of various lysates using glucose-6-phosphate isomerase Rabbit pAb (STJ28996) at 1:1000 dilution.

Secondary antibody: HRP-conjugated Goat anti-Rabbit IgG (H+L) (STJS000856) at 1:10000 dilution.

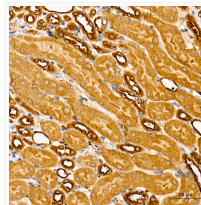
Lysates/proteins: 25 Mu g per lane.
Blocking buffer: 3% nonfat dry milk in TBST.
Detection: ECL Basic Kit
Exposure time: 90s.



Western blot analysis of various lysates using glucose-6-phosphate isomerase Rabbit pAb (STJ28996) at 1:1000 dilution.

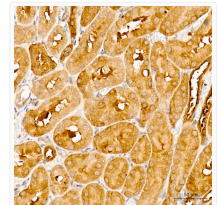
Secondary antibody: HRP-conjugated Goat anti-Rabbit IgG (H+L) (STJS000856) at 1:10000 dilution.

Lysates/proteins: 25 Mu g per lane.
Blocking buffer: 3% nonfat dry milk in TBST.
Detection: ECL Basic Kit
Exposure time: 90s.



Immunohistochemistry analysis of paraffin-embedded Mouse kidney tissue, High pressure, using glucose-6-phosphate isomerase Rabbit pAb (STJ28996) at a dilution of 1:800 (40x lens).

antigen retrieval performed with 0. 01M Tris-EDTA Buffer (pH 9. 0) prior to immunohistochemistry staining.



Immunohistochemistry analysis of paraffin-embedded Rat kidney tissue, High pressure, using glucose-6-phosphate isomerase Rabbit pAb (STJ28996) at a dilution of 1:800 (40x lens).

antigen retrieval performed with 0. 01M Tris-EDTA Buffer (pH 9. 0) prior to immunohistochemistry staining.