

Anti-BLOC1S1 antibody (29-153) (STJ28992)

GENERAL INFORMATION

Product Type	Primary antibodies
Applications	WB/ELISA
Host / Source	Rabbit
Reactivity	Mouse

PRODUCT PROPERTIES

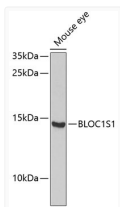
Clonality	Polyclonal
Concentration	Lot specific
Conjugation	Unconjugated
Purification	Affinity purification
Dilution Range	WB:1:500-1:2000 ELISA:Recommended starting concentration is 1 Mu g/mL. Please optimize the concentration based on your specific assay requirements.
Formulation	PBS with 0.02% Sodium Azide, 50% Glycerol, pH 7.3.
Isotype	IgG
Molecular Weight	Protein Mw: 17kDa Observed Mw: 14kDa
Storage Instruction	Store at -20°C for up to 1 year from the date of receipt, and avoid repeat freeze-thaw cycles.

TARGET INFORMATION

Gene ID	2647
Gene Symbol	BLOC1S1
UniProt ID	BL1S1_HUMAN
Immunogen Region	29-153
Immunogen Sequence	MLSRLLKEHQAKQNERKELQ EKRRREAITAATCLTEALVD HLNVGVAQAYMNQRKLDHEV KTLQVQAAQFAKQTGWIGM VENFNQALKEIGDVENWARS IELDMRTIATALEYVYKGQL QSAPS
Specificity	Recombinant fusion protein containing a sequence corresponding to amino acids 29-153 of human BLOC1S1 (NP_001478.2).

ADDITIONAL INFORMATION

Note STRICTLY FOR FURTHER SCIENTIFIC RESEARCH USE ONLY (RUO). MUST NOT TO BE USED IN DIAGNOSTIC OR THERAPEUTIC APPLICATIONS.



Western blot analysis of lysates from mouse eye, using BLOC1S1 Rabbit pAb (STJ28992) at 1:1000 dilution.

Secondary antibody: HRP-conjugated Goat anti-Rabbit IgG (H+L) (STJS000856) at 1:10000 dilution.

Lysates/proteins: 25 Mu g per lane.

Blocking buffer: 3% nonfat dry milk in TBST.

Detection: ECL Enhanced Kit

Exposure time: 30s.