

Anti-FABP6 antibody (1-128) (STJ28986)

GENERAL INFORMATION

Product Type	Primary antibodies
Applications	WB/IF/ICC/ELISA
Host / Source	Rabbit
Reactivity	Human/Mouse/Rat

PRODUCT PROPERTIES

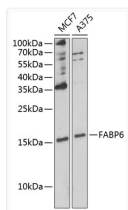
Clonality	Polyclonal
Concentration	Lot specific
Conjugation	Unconjugated
Purification	Affinity purification
Dilution Range	WB:1:500-1:1000 IF/CC:1:50-1:200 ELISA:Recommended starting concentration is 1 μ g/mL. Please optimize the concentration based on your specific assay requirements.
Formulation	PBS with 0.02% Sodium Azide, 50% Glycerol, pH 7.3.
Isotype	IgG
Molecular Weight	Protein Mw: 14kDa Observed Mw: 18kDa
Storage Instruction	Store at -20°C for up to 1 year from the date of receipt, and avoid repeat freeze-thaw cycles.

TARGET INFORMATION

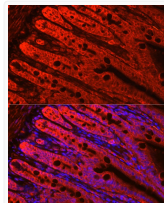
Gene ID	2172
Gene Symbol	FABP6
UniProt ID	FABP6_HUMAN
Immunogen Region	1-128
Immunogen Sequence	MAFTGKFEMESEKNYDEFMK LLGISSDVIEKARNFKIVTE VQQDGDFTWSQHYSGGHTM TNKFTVGGKESNIQTMGGKTF KATVQMEGGKLVNFPNYHQ TSEIVGDKLVEVSTIGGVTY ERVSKRLA
Specificity	Recombinant fusion protein containing a sequence corresponding to amino acids 1-128 of human FABP6 (NP_001436.1).

ADDITIONAL INFORMATION

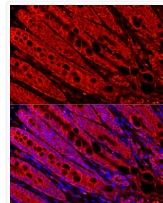
Note STRICTLY FOR FURTHER SCIENTIFIC RESEARCH USE ONLY (RUO). MUST NOT TO BE USED IN DIAGNOSTIC OR THERAPEUTIC APPLICATIONS.



Western blot analysis of extracts of various cell lines, using FABP6 antibody (STJ28986) at 1:1000 dilution. Secondary antibody: HRP Goat Anti-rabbit IgG (H+L) (STJS000856) at 1:10000 dilution. Lysates/proteins: 25 μ g per lane. Blocking buffer: 3% non-fat dry milk in TBST. Detection: ECL Basic Kit. Exposure time: 90s.



Perform high pressure antigen retrieval with 10 mM citrate buffer pH 6.0 before commencing with IF staining protocol. Immunofluorescence analysis of mouse small intestine cells using FABP6 rabbit polyclonal antibody (STJ28986) at dilution of 1:200 (40x lens). Blue: DAPI for nuclear staining.



Perform high pressure antigen retrieval with 10 mM citrate buffer pH 6.0 before commencing with IF staining protocol. Immunofluorescence analysis of rat small intestine cells using FABP6 rabbit polyclonal antibody (STJ28986) at dilution of 1:200 (40x lens). Blue: DAPI for nuclear staining.