

Anti-DGKA antibody (1-200) (STJ28976)

GENERAL INFORMATION

Product Type	Primary antibodies
Applications	WB/ELISA
Host / Source	Rabbit
Reactivity	Human/Mouse/Rat

PRODUCT PROPERTIES

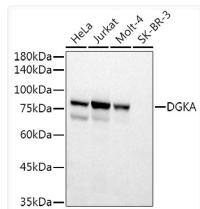
Clonality	Polyclonal
Concentration	Lot specific
Conjugation	Unconjugated
Purification	Affinity purification
Dilution Range	WB:1:500-1:1000 ELISA:Recommended starting concentration is 1 Mu g/mL. Please optimize the concentration based on your specific assay requirements.
Formulation	PBS with 0.09% Sodium Azide, 50% Glycerol, pH7.3.
Isotype	IgG
Molecular Weight	Protein Mw: 83kDa Observed Mw: 80kDa
Storage Instruction	Store at -20°C for up to 1 year from the date of receipt, and avoid repeat freeze-thaw cycles.

TARGET INFORMATION

Gene ID	1606
Gene Symbol	DGKA
UniProt ID	DGKA_HUMAN
Immunogen Region	1-200
Immunogen Sequence	MAKERGLISPSDFAQLQKYM EYSTKKVSDVLKLFEDGEMA KYVQGDGAIYEGFQQFLKIY LEVDNVPRLSLALFQSFET GHCLNETNVTKDVVCLNDVS CYFSLLEGGRPEDKLEFTFK LYDTRNGILDSSVEVDKIL QMMRVAEYLDWDVSELRPIL QEMMKEIDYDGGSGSVSQAEW VRAGATTVPLLVLGLEM TL
Specificity	Recombinant fusion protein containing a sequence corresponding to amino acids 1-200 of human DGKA (NP_958852.1).

ADDITIONAL INFORMATION

Note **STRICTLY FOR FURTHER SCIENTIFIC RESEARCH USE ONLY (RUO). MUST NOT TO BE USED IN DIAGNOSTIC OR THERAPEUTIC APPLICATIONS.**



Western blot analysis of extracts of various cell lines, using DGKA Rabbit polyclonal antibody (STJ28976) at 1:500 dilution. Secondary antibody: HRP Goat Anti-Rabbit IgG (H+L) (STJS00856) at 1:10000 dilution. Lysates/proteins: 25 Mu g per lane. Blocking buffer: 3% nonfat dry milk in TBST. Detection: ECL Basic Kit. Exposure time: 3s.