

## Anti-ATP6V1B1 antibody (1-280) (STJ28956)

### GENERAL INFORMATION

|               |                    |
|---------------|--------------------|
| Product Type  | Primary antibodies |
| Applications  | WB/IF/ICC/ELISA    |
| Host / Source | Rabbit             |
| Reactivity    | Human/Mouse/Rat    |

### PRODUCT PROPERTIES

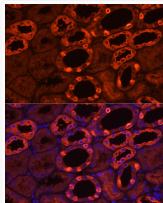
|                     |   |
|---------------------|---|
| Clonality           | Polyclonal  |
| Concentration       | Lot specific  |
| Conjugation         | Unconjugated  |
| Purification        | Affinity purification   |
| Dilution Range      | WB:1:500-1:2000<br>IF/CC:1:50-1:200<br>ELISA:Recommended starting concentration is 1 $\mu$ g/mL. Please optimize the concentration based on your specific assay requirements. |
| Formulation         | PBS with 0.02% Sodium Azide, 50% Glycerol, pH 7.3.  |
| Isotype             | IgG   |
| Molecular Weight    | Protein Mw: 57kDa<br>Observed Mw: 57kDa   |
| Storage Instruction | Store at -20°C for up to 1 year from the date of receipt, and avoid repeat freeze-thaw cycles.  |

### TARGET INFORMATION

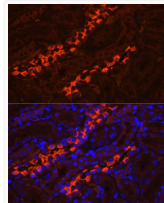
|                    |  |
|--------------------|--|
| Gene ID            | <a href="#">525</a>  |
| Gene Symbol        | <a href="#">ATP6V1B1</a>   |
| UniProt ID         | <a href="#">VATB1_HUMAN</a>  |
| Immunogen Region   | 1-280  |
| Immunogen Sequence | MAMEIDSRPGGLPGSSCNLG AAREHMQAVTRNYITHPRVT YRTVCSVNGPLVLDRVKFA QYAEIVHFTLPDGTQRSGQV LEVAGTKAIVQVFEGTSGID ARKTTCEFTGDILRTPVSED MLGRVFNFGSGKPIDKGPVVM AEDFLDINGQPINPHSRIYP EEMIQTGISPIDVMNSIARG QKIPIFSAAGLPHNEIAAQI CRQAGLVKKSKAVALDYHDDN FAIVFAAMGVNMMETARFFK |
| Specificity        | Recombinant fusion protein containing a sequence corresponding to amino acids 1-280 of human ATP6V1B1 (NP_001683.2).   |

### ADDITIONAL INFORMATION

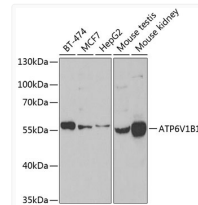
Note STRICTLY FOR FURTHER SCIENTIFIC RESEARCH USE ONLY (RUO). MUST NOT TO BE USED IN DIAGNOSTIC OR THERAPEUTIC APPLICATIONS.



Immunofluorescence analysis of human kidney using ATP6V1B1 Rabbit polyclonal antibody (STJ28956) at dilution of 1:200 (40x lens). Blue: DAPI for nuclear staining.



Immunofluorescence analysis of rat kidney using ATP6V1B1 Rabbit polyclonal antibody (STJ28956) at dilution of 1:200 (40x lens). Blue: DAPI for nuclear staining.



Western blot analysis of extracts of various cell lines, using ATP6V1B1 antibody (STJ28956) at 1:1000 dilution. Secondary antibody: HRP Goat Anti-Rabbit IgG (H+L) (STJS000856) at 1:10000 dilution. Lysates/proteins: 25  $\mu$ g per lane. Blocking buffer: 3% nonfat dry milk in TBST. Detection: ECL Basic Kit. Exposure time: 90s.