

## Anti-FBXO32 antibody (206-355) (STJ28908)

### GENERAL INFORMATION

|               |                    |
|---------------|--------------------|
| Product Type  | Primary antibodies |
| Applications  | WB/IF/ICC/ELISA    |
| Host / Source | Rabbit             |
| Reactivity    | Human/Mouse        |

### PRODUCT PROPERTIES

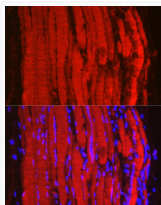
|                     |  |
|---------------------|--|
| Clonality           | Polyclonal   |
| Concentration       | Lot specific   |
| Conjugation         | Unconjugated   |
| Purification        | Affinity purification  |
| Dilution Range      | WB:1:500-1:1000<br>IF/CC:1:50-1:200<br>ELISA:Recommended starting concentration is 1 Mu g/mL. Please optimize the concentration based on your specific assay requirements. |
| Formulation         | PBS with 0.01% Thimerosal, 50% Glycerol, pH 7.3.   |
| Isotype             | IgG  |
| Molecular Weight    | Protein Mw: 42kDa<br>Observed Mw: 40kDa  |
| Storage Instruction | Store at -20°C for up to 1 year from the date of receipt, and avoid repeat freeze-thaw cycles.   |

### TARGET INFORMATION

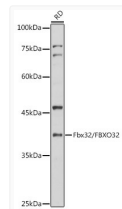
|                    |  |
|--------------------|--|
| Gene ID            | <a href="#">114907</a>   |
| Gene Symbol        | <a href="#">FBXO32</a>   |
| UniProt ID         | <a href="#">FBX32_HUMAN</a>  |
| Immunogen Region   | 206-355  |
| Immunogen Sequence | WQQQLNNIQITRPAFKGLTF TDLPCLQLNIMQRLSDGRD LVSLGQAAPDLHVLSEDRLL<br>WKKLCQYHFSERQIRKRLIL SDKGQLDWKKMYFKLVRCYP RKEQYGDTLQLCKHCHILSWS<br>KGTDPCTANNPESCSVLSL PQDFINLFKF |
| Specificity        | Recombinant fusion protein containing a sequence corresponding to amino acids 206-355 of human Fbx32/FBXO32 (NP_478136.1).   |

### ADDITIONAL INFORMATION

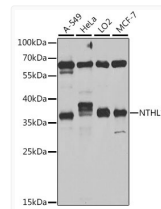
Note **STRICTLY FOR FURTHER SCIENTIFIC RESEARCH USE ONLY (RUO). MUST NOT TO BE USED IN DIAGNOSTIC OR THERAPEUTIC APPLICATIONS.**



Immunofluorescence analysis of paraffin-embedded mouse skeletal muscle using Fbx32/FBXO32 Rabbit polyclonal antibody (STJ28908) at dilution of 1:100 (40x lens). Secondary antibody: Cy3 Goat Anti-Rabbit IgG (H+L) at 1:500 dilution. Blue: DAPI for nuclear staining.



Western blot analysis of lysates from RD cells, using Fbx32/FBXO32 Rabbit polyclonal antibody (STJ28908) at 1:1000 dilution. Secondary antibody: HRP Goat Anti-Rabbit IgG (H+L) (STJS000856) at 1:10000 dilution. Lysates/proteins: 25 Mu g per lane. Blocking buffer: 3% nonfat dry milk in TBST. Detection: ECL Basic Kit. Exposure time: 1s.



Western blot analysis of extracts of various cell lines, using NTHL1 antibody (A6820) at 1:1000 dilution. Secondary antibody: HRP Goat Anti-Rabbit IgG (H+L) (STJS000856) at 1:10000 dilution. Lysates/proteins: 25 Mu g per lane. Blocking buffer: 3% nonfat dry milk in TBST. Detection: ECL Basic Kit. Exposure time: 5s.